



## NMD3 rabbit pAb

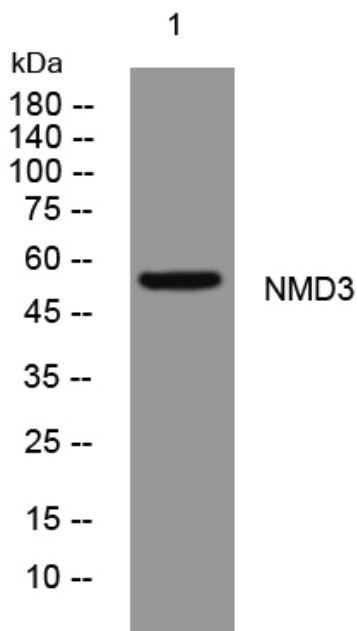
<b>Catalog No</b>	YP-Ab-09096
<b>Isotype</b>	IgG
<b>Reactivity</b>	Human; Mouse
<b>Applications</b>	WB
<b>Gene Name</b>	NMD3 CGI-07
<b>Protein Name</b>	NMD3
<b>Immunogen</b>	Synthesized peptide derived from human NMD3 AA range: 235-285
<b>Specificity</b>	This antibody detects endogenous levels of NMD3 at Human/Mouse
<b>Formulation</b>	Liquid in PBS containing 50% glycerol, 0.5% BSA and 0.02% sodium azide.
<b>Source</b>	Polyclonal, Rabbit,IgG
<b>Purification</b>	The antibody was affinity-purified from rabbit serum by affinity-chromatography using specific immunogen.
<b>Dilution</b>	WB 1: 500-2000
<b>Concentration</b>	1 mg/ml
<b>Purity</b>	≥90%
<b>Storage Stability</b>	-20°C/1 year
<b>Synonyms</b>	
<b>Observed Band</b>	
<b>Cell Pathway</b>	Cytoplasm . Nucleus . Shuttles between the nucleus/nucleolus and the cytoplasm in a XPO1/CRM1-dependent manner. .
<b>Tissue Specificity</b>	
<b>Function</b>	function:Acts as an adapter for the XPO1/CRM1-mediated export of the 60S ribosomal subunit.,similarity:Belongs to the NMD3 family.,subcellular location:Shuttles between the nucleus/nucleolus and the cytoplasm in a XPO1/CRM1-dependent manner.,subunit:Found in a 60S ribosomal subunit export complex with RAN and XPO1. Interacts with XPO1. Associates with the 60S ribosomal subunit.,
<b>Background</b>	Ribosomal 40S and 60S subunits associate in the nucleolus and are exported to the cytoplasm. The protein encoded by this gene is involved in the passage of the 60S subunit through the nuclear pore complex and into the cytoplasm. Several transcript variants exist for this gene, but the full-length natures of only two have been described to date. [provided by RefSeq, Feb 2016],
<b>matters needing attention</b>	Avoid repeated freezing and thawing!



**Usage suggestions**

This product can be used in immunological reaction related experiments. For more information, please consult technical personnel.

**Products Images**



Western blot analysis of lysates from A431 cells, primary antibody was diluted at 1:1000, 4° over night