



ACRC rabbit pAb

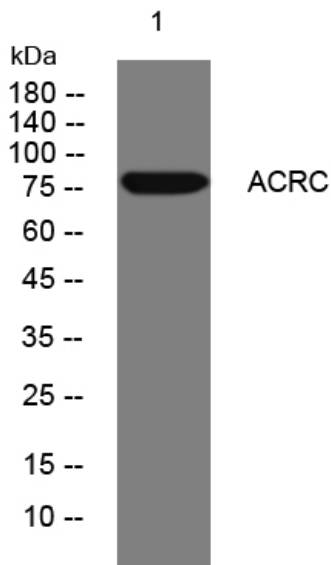
Catalog No	YP-Ab-09098
Isotype	IgG
Reactivity	Human;Rat;Mouse;
Applications	WB
Gene Name	ACRC
Protein Name	ACRC
Immunogen	Synthesized peptide derived from human ACRC AA range: 444-494
Specificity	This antibody detects endogenous levels of ACRC at Human
Formulation	Liquid in PBS containing 50% glycerol, 0.5% BSA and 0.02% sodium azide.
Source	Polyclonal, Rabbit,IgG
Purification	The antibody was affinity-purified from rabbit serum by affinity-chromatography using specific immunogen.
Dilution	WB 1: 500-2000
Concentration	1 mg/ml
Purity	≥90%
Storage Stability	-20°C/1 year
Synonyms	
Observed Band	
Cell Pathway	Nucleus . Nucleus, PML body . Chromosome . Co-localizes with SUMO2 at PML bodies in all interphase cells (PubMed:30914427). Localizes on condensed chromosomes in spermatocytes in G2 and M during meiotic prophase (By similarity) .
Tissue Specificity	Expressed in germ cells of the testis (at protein level) (PubMed:27718356). Detected in skeletal muscle, liver, kidney, pancreas, heart, lung and brain (PubMed:11714101). Expressed throughout spermatogenesis, from spermatogonia to elongated spermatids, in normal adult testis (at protein level) (PubMed:33963445).
Function	similarity:Belongs to the serine-aspartate repeat-containing protein (SDr) family.,tissue specificity:Detected in skeletal muscle, liver, kidney, pancreas, heart, lung and brain.,
Background	
matters needing attention	Avoid repeated freezing and thawing!



Usage suggestions

This product can be used in immunological reaction related experiments. For more information, please consult technical personnel.

Products Images



Western blot analysis of lysates from MCF-7 cells, primary antibody was diluted at 1:1000, 4° over night