

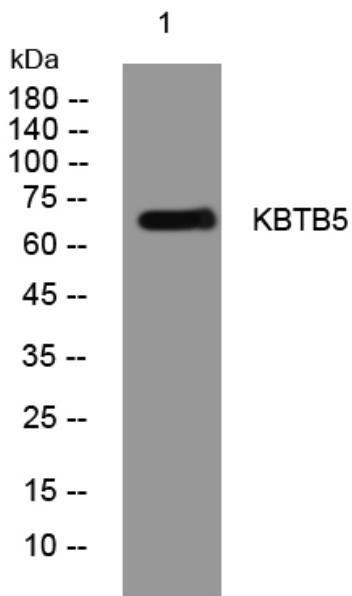


KBTB5 rabbit pAb

Catalog No	YP-Ab-09102
Isotype	IgG
Reactivity	Human; Mouse
Applications	WB
Gene Name	KBTBD5 SRYP
Protein Name	KBTB5
Immunogen	Synthesized peptide derived from human KBTB5 AA range: 400-450
Specificity	This antibody detects endogenous levels of KBTB5 at Human/Mouse
Formulation	Liquid in PBS containing 50% glycerol, 0.5% BSA and 0.02% sodium azide.
Source	Polyclonal, Rabbit,IgG
Purification	The antibody was affinity-purified from rabbit serum by affinity-chromatography using specific immunogen.
Dilution	WB 1: 500-2000
Concentration	1 mg/ml
Purity	≥90%
Storage Stability	-20°C/1 year
Synonyms	
Observed Band	
Cell Pathway	Cytoplasm . Cytoplasm, myofibril, sarcomere, A band . Cytoplasm, myofibril, sarcomere, I band .
Tissue Specificity	Highly expressed in fetal (19, 23 and 31 weeks of gestation) and adult skeletal muscle; expression levels tend to be higher in fetal compared to postnatal muscles (at protein level). Also expressed in fetal and adult heart.
Function	similarity:Contains 1 BACK (BTB/Kelch associated) domain.,similarity:Contains 1 BTB (POZ) domain.,similarity:Contains 5 Kelch repeats.,
Background	This gene encodes a protein containing a BACK domain, a BTB/POZ domain, and 5 Kelch repeats, however, its exact function is not known. The gene and the multi-domain protein structure are conserved across different taxa, including primates, rodents, chicken and zebrafish. [provided by RefSeq, Dec 2012],
matters needing attention	Avoid repeated freezing and thawing!
Usage suggestions	This product can be used in immunological reaction related experiments. For more information, please consult technical personnel.



Products Images



Western blot analysis of lysates from MCF-7 cells,
primary antibody was diluted at 1:1000, 4° over night