

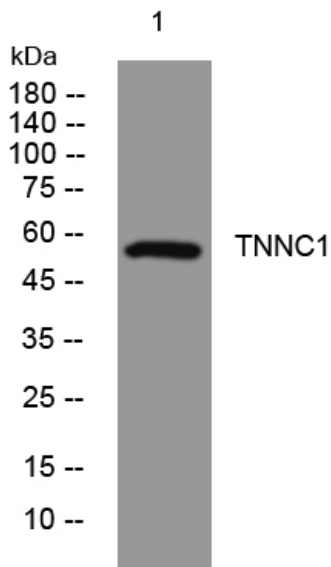


CCD11 rabbit pAb

Catalog No	YP-Ab-09112
Isotype	IgG
Reactivity	Human; Mouse
Applications	WB
Gene Name	CCDC11
Protein Name	CCD11
Immunogen	Synthesized peptide derived from human CCD11 AA range: 59-109
Specificity	This antibody detects endogenous levels of CCD11 at Human/Mouse
Formulation	Liquid in PBS containing 50% glycerol, 0.5% BSA and 0.02% sodium azide.
Source	Polyclonal, Rabbit,IgG
Purification	The antibody was affinity-purified from rabbit serum by affinity-chromatography using specific immunogen.
Dilution	WB 1: 500-2000
Concentration	1 mg/ml
Purity	≥90%
Storage Stability	-20°C/1 year
Synonyms	
Observed Band	
Cell Pathway	Cytoplasm, cytoskeleton, cilium axoneme .
Tissue Specificity	Expressed in skin fibroblasts (at protein level).
Function	
Background	This gene belongs to the CFAP53 family. It was found to be differentially expressed by the ciliated cells of frog epidermis and in skin fibroblasts from human. Mutations in this gene are associated with visceral heterotaxy-6, which implicates this gene in determination of left-right asymmetric patterning. [provided by RefSeq, Aug 2015],
matters needing attention	Avoid repeated freezing and thawing!
Usage suggestions	This product can be used in immunological reaction related experiments. For more information, please consult technical personnel.



Products Images



Western blot analysis of lysates from HuvEc cells,
primary antibody was diluted at 1:1000, 4° over night