



## G3ST3 rabbit pAb

<b>Catalog No</b>	YP-Ab-09116
<b>Isotype</b>	IgG
<b>Reactivity</b>	Human; Mouse
<b>Applications</b>	WB
<b>Gene Name</b>	GAL3ST3
<b>Protein Name</b>	G3ST3
<b>Immunogen</b>	Synthesized peptide derived from human G3ST3 AA range: 191-241
<b>Specificity</b>	This antibody detects endogenous levels of G3ST3 at Human/Mouse
<b>Formulation</b>	Liquid in PBS containing 50% glycerol, 0.5% BSA and 0.02% sodium azide.
<b>Source</b>	Polyclonal, Rabbit,IgG
<b>Purification</b>	The antibody was affinity-purified from rabbit serum by affinity-chromatography using specific immunogen.
<b>Dilution</b>	WB 1: 500-2000
<b>Concentration</b>	1 mg/ml
<b>Purity</b>	≥90%
<b>Storage Stability</b>	-20°C/1 year
<b>Synonyms</b>	
<b>Observed Band</b>	
<b>Cell Pathway</b>	Golgi apparatus, Golgi stack membrane ; Single-pass type II membrane protein .
<b>Tissue Specificity</b>	Highly expressed in thyroid, brain, kidney, heart and spinal cord.
<b>Function</b>	cofactor:Magnesium.,function:Transfers a sulfate to position 3 of non-reducing beta-galactosyl residues in N-glycans and core2-branched O-glycans. Has high activity towards Gal-beta-1,4-GlcNAc, Gal-beta-1,4(Fuc-alpha-1,3)GlcNAc and lower activity towards Gal-beta-1,3(Fuc-alpha-1,4)GlcNAc.,online information:GlycoGene database,pathway:Protein modification; carbohydrate sulfation.,similarity:Belongs to the galactose-3-O-sulfotransferase family.,tissue specificity:Highly expressed in thyroid, brain, kidney, heart and spinal cord.,
<b>Background</b>	This gene encodes a member of the galactose-3-O-sulfotransferase protein family. The product of this gene catalyzes sulfonation by transferring a sulfate group to the 3' position of galactose in N-acetyllactosamine in both type 2 (Gal-beta-1-4GlcNAc-R) oligosaccharides and core-2-branched O-glycans, but



not on type 1 or core-1-branched structures. This gene, which has also been referred to as GAL3ST2, is different from the GAL3ST2 gene located on chromosome 2 that encodes a related enzyme with distinct tissue distribution and substrate specificities, compared to galactose-3-O-sulfotransferase 3. [provided by RefSeq, Jul 2008],

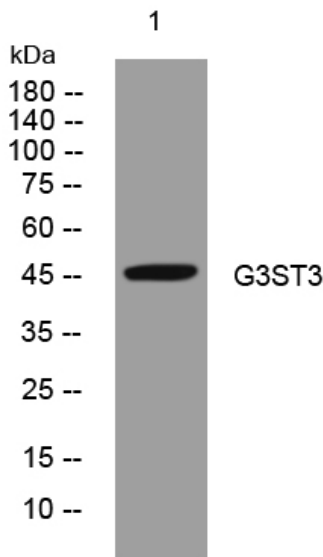
**matters needing attention**

Avoid repeated freezing and thawing!

**Usage suggestions**

This product can be used in immunological reaction related experiments. For more information, please consult technical personnel.

**Products Images**



Western blot analysis of lysates from HCT116 cells, primary antibody was diluted at 1:1000, 4°over night