



# PRAF3 rabbit pAb

<b>Catalog No</b>	YP-Ab-09124
<b>Isotype</b>	IgG
<b>Reactivity</b>	Human; Mouse;Rat
<b>Applications</b>	WB
<b>Gene Name</b>	ARL6IP5 DERP11 JWA PRA2 PRAF3 HSPC127
<b>Protein Name</b>	PRAF3
<b>Immunogen</b>	Synthesized peptide derived from human PRAF3 AA range: 120-170
<b>Specificity</b>	This antibody detects endogenous levels of PRAF3 at Human/Mouse/Rat
<b>Formulation</b>	Liquid in PBS containing 50% glycerol, 0.5% BSA and 0.02% sodium azide.
<b>Source</b>	Polyclonal, Rabbit,IgG
<b>Purification</b>	The antibody was affinity-purified from rabbit serum by affinity-chromatography using specific immunogen.
<b>Dilution</b>	WB 1: 500-2000
<b>Concentration</b>	1 mg/ml
<b>Purity</b>	≥90%
<b>Storage Stability</b>	-20°C/1 year
<b>Synonyms</b>	
<b>Observed Band</b>	
<b>Cell Pathway</b>	Endoplasmic reticulum membrane ; Multi-pass membrane protein . Cell membrane ; Multi-pass membrane protein . Cytoplasm . Cytoplasm, cytoskeleton . Also exists as a soluble form in the cytoplasm. Associated with microtubules. .
<b>Tissue Specificity</b>	
<b>Function</b>	function:Regulates intracellular concentrations of taurine and glutamate. Negatively modulates SLC1A1/EAAC1 glutamate transport activity by decreasing its affinity for glutamate. May be involved in membrane traffic.,induction:By methyl-beta-cyclodextrin (By similarity). Up-regulated upon induced differentiation and in heat stress.,similarity:Belongs to the PRA1 family.,subcellular location:Also exists as a soluble form in the cytoplasm. Associated with microtubules.,subunit:Forms multimers. Binds to prenylated RAB1A and RAB3A, to the neuronal glutamate transporter SLC1A1/EAAC1, and to the ADP-ribosylation like factor ARL6, a member of the Ras superfamily. Does not bind to VAMP2.,
<b>Background</b>	Expression of this gene is affected by vitamin A. The encoded protein of this gene may be associated with the cytoskeleton. A similar protein in rats may play a role in the regulation of cell differentiation. The rat protein binds and inhibits the cell membrane glutamate transporter EAAC1. The expression of the rat gene is



upregulated by retinoic acid, which results in a specific reduction in EAAC1-mediated glutamate transport. [provided by RefSeq, Jul 2008],

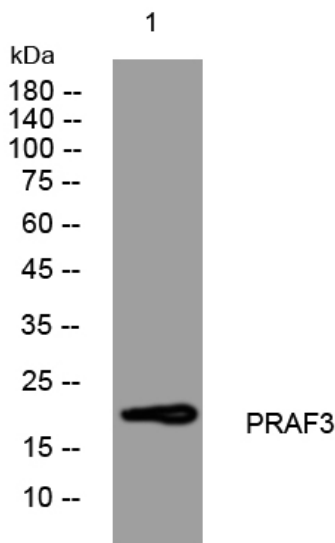
**matters needing attention**

Avoid repeated freezing and thawing!

**Usage suggestions**

This product can be used in immunological reaction related experiments. For more information, please consult technical personnel.

**Products Images**



Western blot analysis of lysates from HpeG2 cells, primary antibody was diluted at 1:1000, 4° over night