



NIBAN rabbit pAb

Catalog No	YP-Ab-09133
Isotype	IgG
Reactivity	Human; Mouse;Rat
Applications	WB
Gene Name	FAM129A C1orf24 NIBAN GIG39
Protein Name	NIBAN
Immunogen	Synthesized peptide derived from human NIBAN AA range: 334-384
Specificity	This antibody detects endogenous levels of NIBAN at Human/Mouse/Rat
Formulation	Liquid in PBS containing 50% glycerol, 0.5% BSA and 0.02% sodium azide.
Source	Polyclonal, Rabbit,IgG
Purification	The antibody was affinity-purified from rabbit serum by affinity-chromatography using specific immunogen.
Dilution	WB 1: 500-2000
Concentration	1 mg/ml
Purity	≥90%
Storage Stability	-20°C/1 year
Synonyms	
Observed Band	
Cell Pathway	Cytoplasm . Membrane ; Lipid-anchor .
Tissue Specificity	Expressed in various types of thyroid tumor such as papillary thyroid carcinomas and oxyphilic thyroid tumors but not in normal thyroid tissue (at protein level). Strongly expressed in heart, skeletal muscle, pancreas, white blood cells and prostate with moderate expression in colon and spleen. Expressed in renal carcinoma cells but not in normal kidney.
Function	function:Regulates phosphorylation of a number of proteins involved in translation regulation including EIF2A, EIF4EBP1 and RPS6KB1. May be involved in the endoplasmic reticulum stress response.,miscellaneous:'Niban' means 'second' in Japanese.,similarity:Belongs to the Niban family.,tissue specificity:Expressed in various types of thyroid tumor such as papillary thyroid carcinomas and oxyphilic thyroid tumors but not in normal thyroid tissue (at protein level). Strongly expressed in heart, skeletal muscle, pancreas, white blood cells and prostate with moderate expression in colon and spleen. Expressed in renal carcinoma cells but not in normal kidney.,
Background	This gene encodes a member of the family with sequence similarity 129 protein family. This gene is highly expressed in several cancer cells and may serve as a prognostic marker for certain cancers. The encoded protein may play a role in



regulating p53-mediated apoptosis. [provided by RefSeq, Sep 2016],

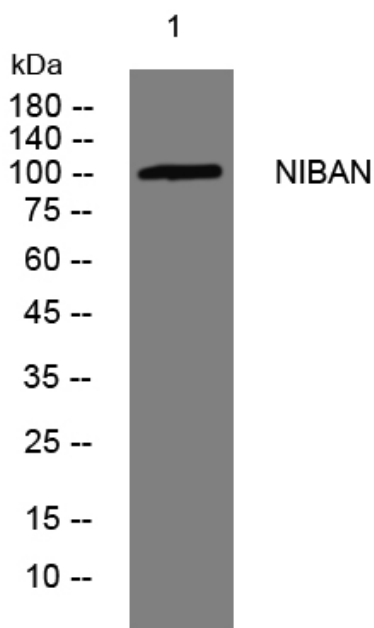
matters needing attention

Avoid repeated freezing and thawing!

Usage suggestions

This product can be used in immunological reaction related experiments. For more information, please consult technical personnel.

Products Images



Western blot analysis of lysates from PC-12 cells, primary antibody was diluted at 1:1000, 4° over night