



## KR104 rabbit pAb

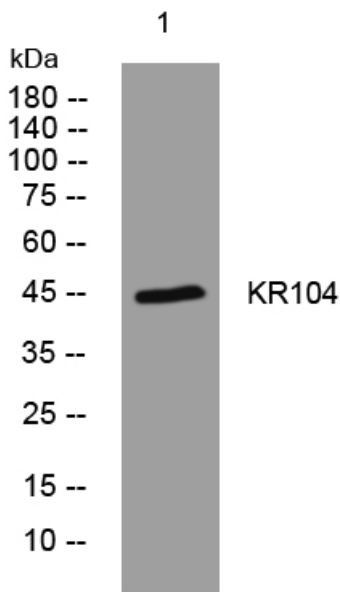
<b>Catalog No</b>	YP-Ab-09137
<b>Isotype</b>	IgG
<b>Reactivity</b>	Human;Rat;Mouse;
<b>Applications</b>	WB
<b>Gene Name</b>	KRTAP10-4 KAP10.4 KAP18-4 KRTAP10.4 KRTAP18-4 KRTAP18.4
<b>Protein Name</b>	KR104
<b>Immunogen</b>	Synthesized peptide derived from human KR104 AA range: 349-399
<b>Specificity</b>	This antibody detects endogenous levels of KR104 at Human
<b>Formulation</b>	Liquid in PBS containing 50% glycerol, 0.5% BSA and 0.02% sodium azide.
<b>Source</b>	Polyclonal, Rabbit,IgG
<b>Purification</b>	The antibody was affinity-purified from rabbit serum by affinity-chromatography using specific immunogen.
<b>Dilution</b>	WB 1: 500-2000
<b>Concentration</b>	1 mg/ml
<b>Purity</b>	≥90%
<b>Storage Stability</b>	-20°C/1 year
<b>Synonyms</b>	
<b>Observed Band</b>	
<b>Cell Pathway</b>	keratin filament,
<b>Tissue Specificity</b>	Restricted to hair root, not detected in any other tissues.
<b>Function</b>	function:In the hair cortex, hair keratin intermediate filaments are embedded in an interfilamentous matrix, consisting of hair keratin-associated proteins (KRTAP), which are essential for the formation of a rigid and resistant hair shaft through their extensive disulfide bond cross-linking with abundant cysteine residues of hair keratins. The matrix proteins include the high-sulfur and high-glycine-tyrosine keratins.,similarity:Belongs to the KRTAP type 10 family.,subunit:Interacts with hair keratins.,tissue specificity:Restricted to hair root, not detected in any other tissues.,
<b>Background</b>	This is an intronless gene located in a cluster of related genes on the q arm of chromosome 21. The proteins encoded by these genes form disulfide bonds with cysteine residues in hair keratins, thereby contributing to the structure and stability of hair fibers. [provided by RefSeq, Apr 2014],
<b>matters needing attention</b>	Avoid repeated freezing and thawing!



**Usage suggestions**

This product can be used in immunological reaction related experiments. For more information, please consult technical personnel.

**Products Images**



Western blot analysis of lysates from THP-1 cells, primary antibody was diluted at 1:1000, 4° over night