



DSCR8 rabbit pAb

Catalog No	YP-Ab-09138
Isotype	IgG
Reactivity	Human;Rat;Mouse;
Applications	IHC;IF
Gene Name	DSCR8 C21orf65 MTAG2
Protein Name	DSCR8
Immunogen	Synthesized peptide derived from human DSCR8 AA range: 9-59
Specificity	This antibody detects endogenous levels of DSCR8 at Human
Formulation	Liquid in PBS containing 50% glycerol, 0.5% BSA and 0.02% sodium azide.
Source	Polyclonal, Rabbit,IgG
Purification	The antibody was affinity-purified from rabbit serum by affinity-chromatography using specific immunogen.
Dilution	IHC-p 1: 50-200. IF 1:50-200
Concentration	1 mg/ml
Purity	≥90%
Storage Stability	-20°C/1 year
Synonyms	
Observed Band	
Cell Pathway	
Tissue Specificity	Expressed in numerous tissues; not found in breast, heart, small intestine and liver (PubMed:12036297). Isoform 1: Predominantly expressed in the testis (PubMed:11920614, PubMed:15472897). Isoform 3: Predominantly expressed in the testis, at lower level in the placenta, during malignant progression of melanocytic tumors and in several tumors of varying origins (PubMed:11920614, PubMed:15472897). Isoform 4: Predominantly expressed in the testis, at lower level in the placenta, during malignant progression of melanocytic tumors and in several tumors of varying origins (PubMed:11920614, PubMed:15472897). Isoform 5: Predominantly expressed in the testis (PubMed:11920614, PubMed:15472897). Isoform 6: Predominantly expressed in the testis (PubMed:11920614, PubMed:15472897).
Function	tissue specificity:Expressed in numerous tissues; not found in breast, heart, small intestine and liver.,
Background	



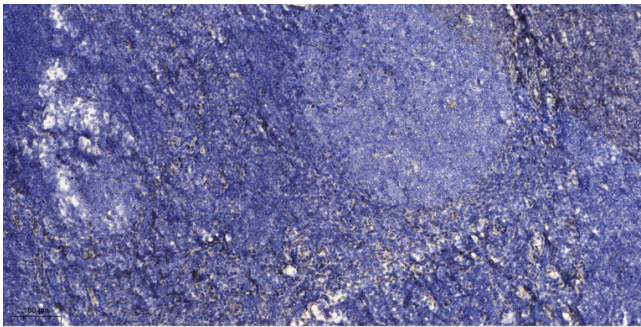
matters needing attention

Avoid repeated freezing and thawing!

Usage suggestions

This product can be used in immunological reaction related experiments. For more information, please consult technical personnel.

Products Images



Immunohistochemical analysis of paraffin-embedded human tonsil. 1, Antibody was diluted at 1:200(4° overnight). 2, Tris-EDTA,pH9.0 was used for antigen retrieval. 3,Secondary antibody was diluted at 1:200(room temperature, 30min).