



# PAPAS rabbit pAb

<b>Catalog No</b>	YP-Ab-09143
<b>Isotype</b>	IgG
<b>Reactivity</b>	Human;Rat;Mouse;
<b>Applications</b>	IHC;IF
<b>Gene Name</b>	PAPPA-AS1 DIPAS PAPPAS
<b>Protein Name</b>	PAPAS
<b>Immunogen</b>	Synthesized peptide derived from human PAPAS AA range: 48-98
<b>Specificity</b>	This antibody detects endogenous levels of PAPAS at Human
<b>Formulation</b>	Liquid in PBS containing 50% glycerol, 0.5% BSA and 0.02% sodium azide.
<b>Source</b>	Polyclonal, Rabbit,IgG
<b>Purification</b>	The antibody was affinity-purified from rabbit serum by affinity-chromatography using specific immunogen.
<b>Dilution</b>	IHC-p 1: 50-200. IF 1:50-200
<b>Concentration</b>	1 mg/ml
<b>Purity</b>	≥90%
<b>Storage Stability</b>	-20°C/1 year
<b>Synonyms</b>	
<b>Observed Band</b>	
<b>Cell Pathway</b>	Endoplasmic reticulum membrane ; Multi-pass membrane protein .
<b>Tissue Specificity</b>	Expressed in placenta with lower expression in brain, kidney and testis.
<b>Function</b>	catalytic activity:Cleavage of the 135-Met-I-Lys-136 bond in insulin-like growth factor binding protein (IGFBP)-4, and the 143-Ser-I-Lys-144 bond in IGFBP-5.,cofactor:Binds 1 zinc ion per subunit.,developmental stage:Present in serum and placenta during pregnancy; levels increase throughout pregnancy.,enzyme regulation:Inhibited by complexation with the proform of PRG2.,function:Metalloproteinase which specifically cleaves IGFBP-4 and IGFBP-5, resulting in release of bound IGF. Cleavage of IGFBP-4 is dramatically enhanced by the presence of IGF, whereas cleavage of IGFBP-5 is slightly inhibited by the presence of IGF.,induction:By 8-bromoadenosine-3',5'-phosphate.,PTM:There appear to be no free sulfhydryl groups.,similarity:Belongs to the peptidase M43B family.,similarity:Contains 5 Sushi (CCP/SCR) domains.,subunit:Homodimer; disulfide-linked. In pregnancy serum, predominantly found as a

## Background



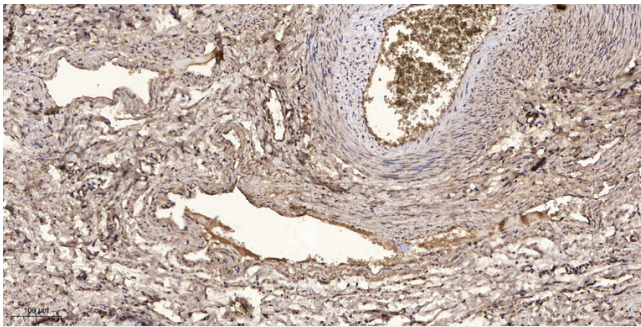
**matters needing attention**

Avoid repeated freezing and thawing!

**Usage suggestions**

This product can be used in immunological reaction related experiments. For more information, please consult technical personnel.

**Products Images**



Immunohistochemical analysis of paraffin-embedded human oophoroma. 1, Antibody was diluted at 1:200(4° overnight). 2, Tris-EDTA,pH9.0 was used for antigen retrieval. 3,Secondary antibody was diluted at 1:200(room temperature, 45min).