

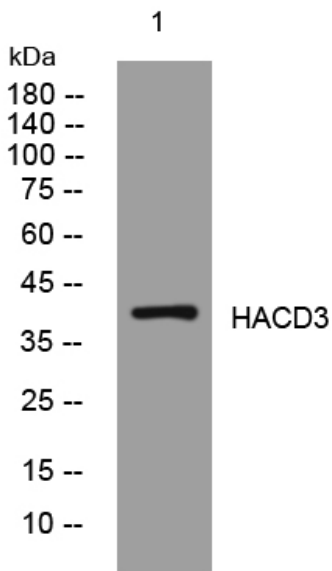


HACD3 rabbit pAb

Catalog No	YP-Ab-09156
Isotype	IgG
Reactivity	Human; Mouse
Applications	WB
Gene Name	PTPLAD1 BIND1 HACD3
Protein Name	HACD3
Immunogen	Synthesized peptide derived from human HACD3 AA range: 255-305
Specificity	This antibody detects endogenous levels of HACD3 at Human/Mouse
Formulation	Liquid in PBS containing 50% glycerol, 0.5% BSA and 0.02% sodium azide.
Source	Polyclonal, Rabbit,IgG
Purification	The antibody was affinity-purified from rabbit serum by affinity-chromatography using specific immunogen.
Dilution	WB 1: 500-2000
Concentration	1 mg/ml
Purity	≥90%
Storage Stability	-20°C/1 year
Synonyms	
Observed Band	
Cell Pathway	Endoplasmic reticulum membrane ; Multi-pass membrane protein .
Tissue Specificity	Highly expressed in testis, kidney, brain, liver and weakly in skeletal muscle, spleen and heart. No expression detected in leukocytes.
Function	function:Involved in Rac1-signaling pathways leading to the modulation of gene expression.,induction:By AKAP12 and histone deacetylase inhibitors such as sodium butyrate.,similarity:Belongs to the PTPLA family.,similarity:Contains 1 CS domain.,subunit:Interacts with RAC1.,tissue specificity:Highly expressed in testis, kidney, brain, liver and weakly in skeletal muscle, spleen and heart.,
Background	
matters needing attention	Avoid repeated freezing and thawing!
Usage suggestions	This product can be used in immunological reaction related experiments. For more information, please consult technical personnel.



Products Images



Western blot analysis of lysates from U2OS cells,
primary antibody was diluted at 1:1000, 4° over night