



PLXA3 rabbit pAb

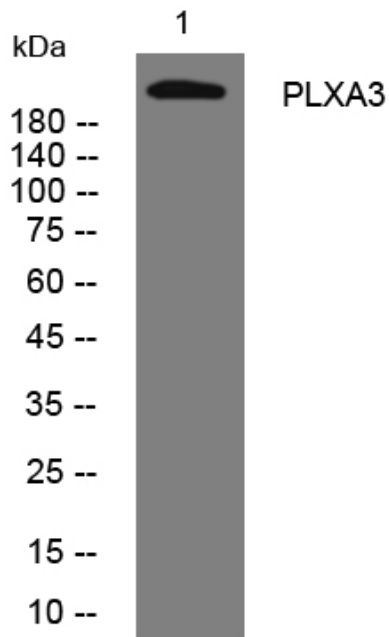
Catalog No	YP-Ab-09157
Isotype	IgG
Reactivity	Human; Mouse;Rat
Applications	WB
Gene Name	PLXNA3 PLXN4 SEX
Protein Name	PLXA3
Immunogen	Synthesized peptide derived from human PLXA3 AA range: 1728-1778
Specificity	This antibody detects endogenous levels of PLXA3 at Human/Mouse/Rat
Formulation	Liquid in PBS containing 50% glycerol, 0.5% BSA and 0.02% sodium azide.
Source	Polyclonal, Rabbit,IgG
Purification	The antibody was affinity-purified from rabbit serum by affinity-chromatography using specific immunogen.
Dilution	WB 1: 500-2000
Concentration	1 mg/ml
Purity	≥90%
Storage Stability	-20°C/1 year
Synonyms	
Observed Band	
Cell Pathway	Cell membrane ; Single-pass type I membrane protein .
Tissue Specificity	
Function	function:Putative receptor involved in the development of neural and epithelial tissues.,similarity:Belongs to the plexin family.,similarity:Contains 1 Sema domain.,similarity:Contains 4 IPT/TIG domains.,tissue specificity:Predominant in neural tissue during development (By similarity); widely expressed in adult tissue.,
Background	This gene encodes a member of the plexin class of proteins. The encoded protein is a class 3 semaphorin receptor, and may be involved in cytoskeletal remodeling and as well as apoptosis. Studies of a similar gene in zebrafish suggest that it is important for axon pathfinding in the developing nervous system. This gene may be associated with tumor progression. [provided by RefSeq, Aug 2013],
matters needing attention	Avoid repeated freezing and thawing!



Usage suggestions

This product can be used in immunological reaction related experiments. For more information, please consult technical personnel.

Products Images



Western blot analysis of lysates from HeLa cells, primary antibody was diluted at 1:1000, 4° over night