

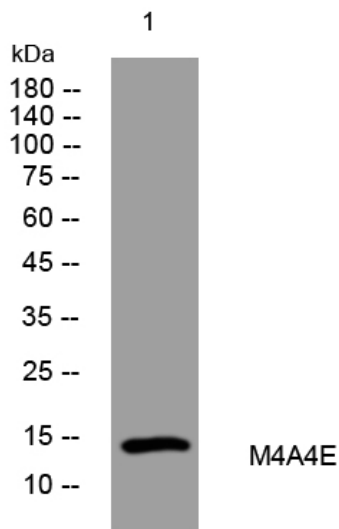


M4A4E rabbit pAb

Catalog No	YP-Ab-09175
Isotype	IgG
Reactivity	Human;Rat;Mouse;
Applications	WB
Gene Name	MS4A4E
Protein Name	M4A4E
Immunogen	Synthesized peptide derived from human M4A4E AA range: 34-84
Specificity	This antibody detects endogenous levels of M4A4E at Human
Formulation	Liquid in PBS containing 50% glycerol, 0.5% BSA and 0.02% sodium azide.
Source	Polyclonal, Rabbit,IgG
Purification	The antibody was affinity-purified from rabbit serum by affinity-chromatography using specific immunogen.
Dilution	WB 1: 500-2000
Concentration	1 mg/ml
Purity	≥90%
Storage Stability	-20°C/1 year
Synonyms	
Observed Band	
Cell Pathway	Membrane ; Multi-pass membrane protein .
Tissue Specificity	
Function	caution:It is uncertain whether Met-1 or Met-4 is the initiator.,sequence caution:Intron retention. The entire sequence corresponds to part of an intron.,similarity:Belongs to the MS4A family.,
Background	Most MS4A genes, including MS4A4E, encode proteins with at least 4 potential transmembrane domains and N- and C-terminal cytoplasmic domains encoded by distinct exons.[supplied by OMIM, Apr 2004],
matters needing attention	Avoid repeated freezing and thawing!
Usage suggestions	This product can be used in immunological reaction related experiments. For more information, please consult technical personnel.



Products Images



Western blot analysis of lysates from HCT116 cells,
primary antibody was diluted at 1:1000, 4° over night