

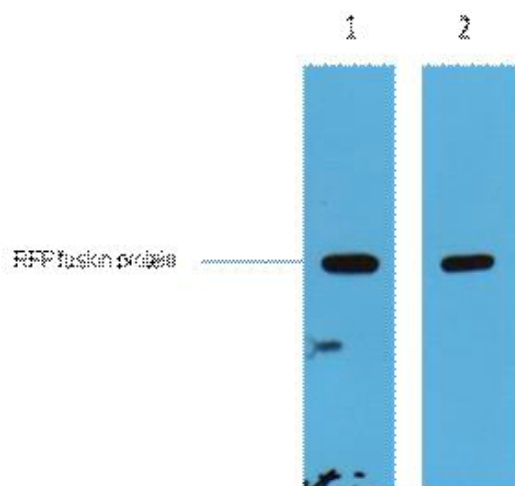


# RFP-Tag Polyclonal Antibody

<b>Catalog No</b>	YP-Ab-10268
<b>Isotype</b>	IgG
<b>Reactivity</b>	Species independent
<b>Applications</b>	WB
<b>Gene Name</b>	
<b>Protein Name</b>	
<b>Immunogen</b>	Recombinant Protein of RFP-Tag
<b>Specificity</b>	The antibody detects RFP tag fusion proteins.
<b>Formulation</b>	PBS, pH 7.4, containing 0.5%BSA, 0.02% sodium azide as Preservative and 50% Glycerol.
<b>Source</b>	Polyclonal, Rabbit,IgG
<b>Purification</b>	The antibody was affinity-purified from rabbit antiserum by affinity-chromatography using specific immunogen.
<b>Dilution</b>	WB: 1:5000
<b>Concentration</b>	1 mg/ml
<b>Purity</b>	≥90%
<b>Storage Stability</b>	-20°C/1 year
<b>Synonyms</b>	YM3208
<b>Observed Band</b>	
<b>Cell Pathway</b>	
<b>Tissue Specificity</b>	
<b>Function</b>	
<b>Background</b>	Red Fluorescent Protein (RFP) is isolated from sea anemone ( <i>Discosoma</i> sp), and commonly used as a molecular tag to study protein localization, reporter gene expression, and protein-protein interactions. Although it exists as a homotetramer, monomeric variants have been constructed for use in various applications.
<b>matters needing attention</b>	Avoid repeated freezing and thawing!
<b>Usage suggestions</b>	This product can be used in immunological reaction related experiments. For more information, please consult technical personnel.



## Products Images



2ug RFP fusion protein+ Primary antibody dilution at  
1) 1:5000 2) 1:20000. Secondary  
antibody(catalog#:RS0002) was diluted at 1:20000