

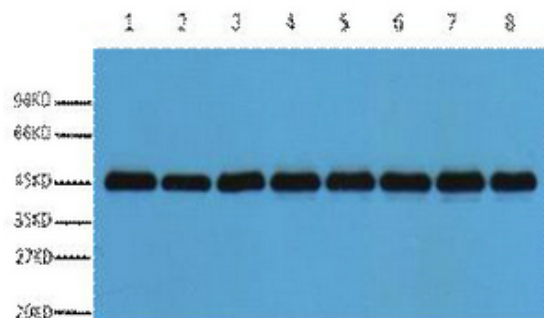


Plant-actin Polyclonal Antibody

Catalog No	YP-Ab-10269
Isotype	IgG
Reactivity	ArabidopsisNicotianatabacumOryzasativaHordeumvulgare
Applications	WB
Gene Name	
Protein Name	
Immunogen	Recombinant Protein of Plant-actin
Specificity	The antibody detects endogenous plant-actin protein.
Formulation	PBS, pH 7.4, containing 0.5%BSA, 0.02% sodium azide as Preservative and 50% Glycerol.
Source	Polyclonal, Rabbit,IgG
Purification	The antibody was affinity-purified from rabbit antiserum by affinity-chromatography using specific immunogen.
Dilution	WB: 1:3000
Concentration	1 mg/ml
Purity	≥90%
Storage Stability	-20°C/1 year
Synonyms	YM3216
Observed Band	43kD
Cell Pathway	
Tissue Specificity	
Function	
Background	Arabidopsis has a complex actin gene family that encodes six protein subclasses. One of the classes is represented by the proteins ACT2 and ACT8, which are similar proteins, but have different flanking sequences, introns and silent nucleotide positions in codons. ACT8 is expressed in root, stems, leaves, flowers, pollen and siliques.
matters needing attention	Avoid repeated freezing and thawing!
Usage suggestions	This product can be used in immunological reaction related experiments. For more information, please consult technical personnel.



Products Images



Western blot analysis of *Nicotiana tabacum* leaf (1), *Nicotiana tabacum* root (2), *Nicotiana* seed (3), *Oryza sativa* flower (4), *Oryza sativa* seed (5), *Oryza sativa* leaf (6), *Hordeum vulgare* seed (7), *Hordeum vulgare* leaves (8), diluted at 1:3000. Secondary antibody(catalog#:RS0002) was diluted at 1:20000