



mCherry-Tag Polyclonal Antibody

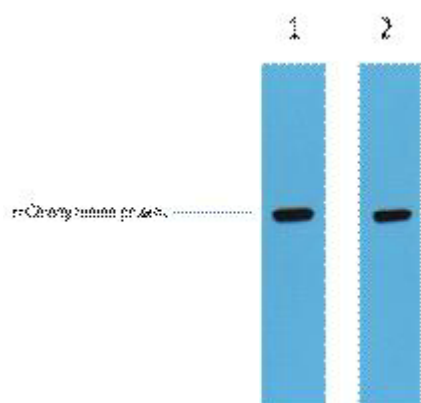
Catalog No	YP-Ab-10277
Isotype	IgG
Reactivity	Species independent
Applications	WB
Gene Name	
Protein Name	
Immunogen	Recombinant Protein of mCherry-Tag
Specificity	The antibody detects mCherry tag fusion proteins.
Formulation	PBS, pH 7.4, containing 0.5%BSA, 0.02% sodium azide as Preservative and 50% Glycerol.
Source	Polyclonal, Rabbit,IgG
Purification	The antibody was affinity-purified from rabbit antiserum by affinity-chromatography using specific immunogen.
Dilution	WB: 1:5000
Concentration	1 mg/ml
Purity	≥90%
Storage Stability	-20°C/1 year
Synonyms	YM3207
Observed Band	
Cell Pathway	
Tissue Specificity	
Function	
Background	mCherry is derived from proteins originally isolated from Cnidarians (jelly fish, sea anemones and corals), and is used as a fluorescent tracer in trasfection and transgenic experiments. The prototype for these fluorescent proteins is Green Fluorescent Protein (GFP), which is a ~27kDa protein isolated originally from the jellyfish <i>Aequoria victoria</i> . The mCherry protein is derived from DsRed, a red fluorescent protein related to GFP isolated from so-called disc corals of the genus <i>Discosoma</i> .
matters needing attention	Avoid repeated freezing and thawing!



Usage suggestions

This product can be used in immunological reaction related experiments. For more information, please consult technical personnel.

Products Images



1ug mCherry fusion protein+ Primary antibody dilution at 1) 1:5000 2) 1:20000. Secondary antibody(catalog#:RS0002) was diluted at 1:20000