



Acetyl Kine Polyclonal Antibody

| | |
|---------------------------|--|
| Catalog No | YP-Ab-10296 |
| Isotype | IgG |
| Reactivity | Species independent |
| Applications | WB |
| Gene Name | |
| Protein Name | |
| Immunogen | Recombinant Protein of Acetyl Kine |
| Specificity | The antibody detects endogenous Lysine Acetylated protein. |
| Formulation | PBS, pH 7.4, containing 0.5%BSA, 0.02% sodium azide as Preservative and 50% Glycerol. |
| Source | Polyclonal, Rabbit,IgG |
| Purification | The antibody was affinity-purified from rabbit antiserum by affinity-chromatography using specific immunogen. |
| Dilution | WB: 1:1000-2000 |
| Concentration | 1 mg/ml |
| Purity | ≥90% |
| Storage Stability | -20°C/1 year |
| Synonyms | YM3306 |
| Observed Band | |
| Cell Pathway | |
| Tissue Specificity | |
| Function | |
| Background | Acetylation of lysine, like phosphorylation of serine, threonine or tyrosine, is an important reversible modification controlling protein activity. The conserved amino-terminal domains of the four core histones (H2A, H2B, H3, and H4) contain lysines that are acetylated by histone acetyltransferases (HATs) and deacetylated by histone deacetylases (HDACs). Signaling resulting in acetylation/deacetylation of histones, transcription factors, and other proteins affects a diverse array of cellular processes including chromatin structure and gene activity, cell growth, differentiation, and apoptosis. Recent proteomic surveys suggest that acetylation of lysine residues may be a widespread and important form of posttranslational protein modification that affects thousands of proteins involved in control of cell cycle and metabolism, longevity, actin polymerization, and nuclear transport. The regulation of protein acetylation status is impaired in cancer and polyglutamine diseases, and HDACs have become promising targets for anti-cancer drugs |



currently in development.

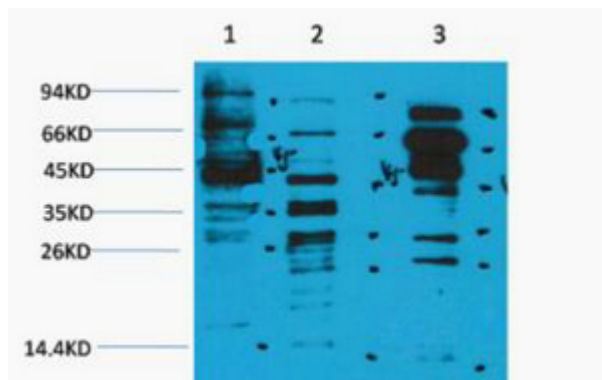
matters needing attention

Avoid repeated freezing and thawing!

Usage suggestions

This product can be used in immunological reaction related experiments. For more information, please consult technical personnel.

Products Images



Western blot analysis of 1) Hela, 2) 3T3, 3) Rat Brain, diluted at 1:2000. Secondary antibody(catalog#:RS0002) was diluted at 1:20000