



# ACE2 Rabbit pAb

<b>Catalog No</b>	YP-Ab-10307
<b>Isotype</b>	IgG
<b>Reactivity</b>	Human; Mouse;Rat
<b>Applications</b>	IHC;WB
<b>Gene Name</b>	ACE2 UNQ868/PRO1885
<b>Protein Name</b>	ACE2
<b>Immunogen</b>	Synthesized peptide derived from human ACE2 AA range: 425-475
<b>Specificity</b>	This antibody detects endogenous levels of ACE2 at Human, Mouse,Rat
<b>Formulation</b>	Liquid in PBS containing 50% glycerol, 0.5% BSA and 0.06% sodium azide.
<b>Source</b>	Polyclonal, Rabbit,IgG
<b>Purification</b>	The antibody was affinity-purified from rabbit serum by affinity-chromatography using specific immunogen.
<b>Dilution</b>	IHC-p1:50-200 ,WB 1:1000-2000
<b>Concentration</b>	1 mg/ml
<b>Purity</b>	≥90%
<b>Storage Stability</b>	-20°C/1 year
<b>Synonyms</b>	Angiotensin-converting enzyme 2 (EC 3.4.17.23) (ACE-related carboxypeptidase) (Angiotensin-converting enzyme homolog) (ACEH) (Metalloprotease MPROT15) [Cleaved into: Processed angiotensin-converting enzyme 2]
<b>Observed Band</b>	120-135kD
<b>Cell Pathway</b>	[Processed angiotensin-converting enzyme 2]: Secreted .; Cell membrane ; Single-pass type I membrane protein . Cytoplasm . Cell projection, cilium . Apical cell membrane . Detected in both cell membrane and cytoplasm in neurons. .; [Isoform 2]: Apical cell membrane .
<b>Tissue Specificity</b>	Expressed in endothelial cells from small and large arteries, and in arterial smooth muscle cells (at protein level) (PubMed:15141377). Expressed in enterocytes of the small intestine, Leydig cells and Sertoli cells (at protein level) (PubMed:15141377). Expressed in the renal proximal tubule and the small intestine (at protein level) (PubMed:18424768). Expressed in heart, kidney, testis, and gastrointestinal system (at protein level) (PubMed:10969042, PubMed:10924499, PubMed:15231706, PubMed:12459472, PubMed:15671045, PubMed:32715618, PubMed:32170560). In lung, expressed at low levels in some alveolar type 2 cells, the expression seems to be individual-specific (at protein level) (PubMed:32425701, PubMed:15141377, PubMed:32715618, PubMed:32170560, PubMed:33432184). Expressed in nasal epith
<b>Function</b>	



### Background

angiotensin I converting enzyme 2(ACE2) Homo sapiens The protein encoded by this gene belongs to the angiotensin-converting enzyme family of dipeptidyl carboxydipeptidases and has considerable homology to human angiotensin 1 converting enzyme. This secreted protein catalyzes the cleavage of angiotensin I into angiotensin 1-9, and angiotensin II into the vasodilator angiotensin 1-7. The organ- and cell-specific expression of this gene suggests that it may play a role in the regulation of cardiovascular and renal function, as well as fertility. In addition, the encoded protein is a functional receptor for the spike glycoprotein of the human coronaviruses SARS and HCoV-NL63.

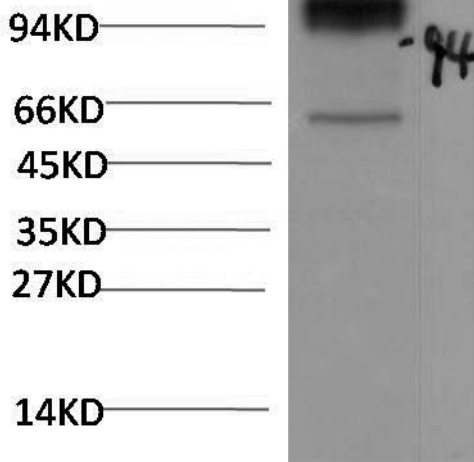
### matters needing attention

Avoid repeated freezing and thawing!

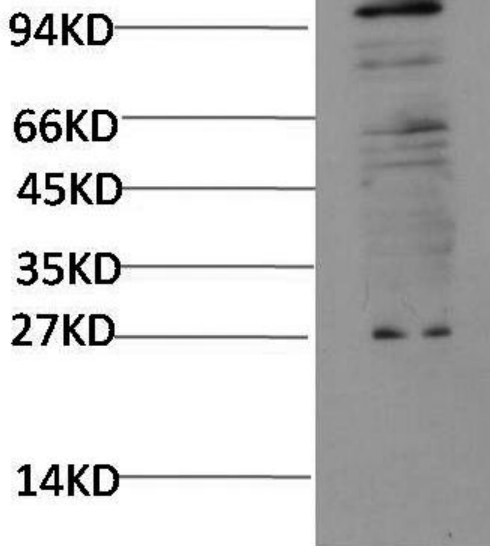
### Usage suggestions

This product can be used in immunological reaction related experiments. For more information, please consult technical personnel.

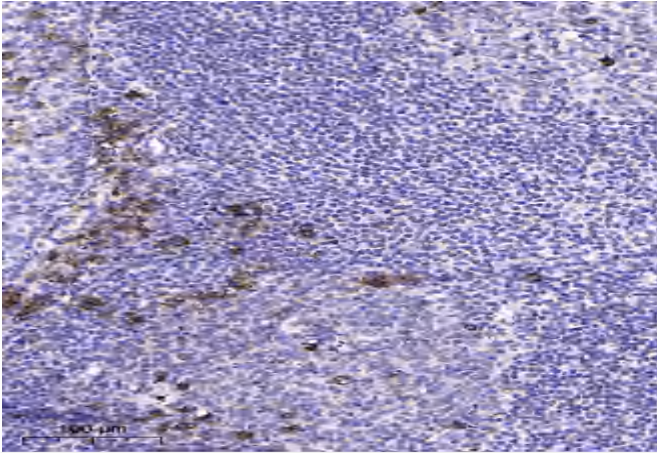
## Products Images



Western blot analysis of 293T transfected ACE2 cell Lysate using Rabbit pAb diluted at 1:5,000.



Western blot analysis of HepG2 cell Lysate using Rabbit pAb diluted at 1:2,000



Immunohistochemical analysis of paraffin-embedded human tonsil. 1, Antibody was diluted at 1:200(4° overnight). 2, Tris-EDTA,pH9.0 was used for antigen retrieval. 3,Secondary antibody was diluted at 1:200(room temperature, 45min).