

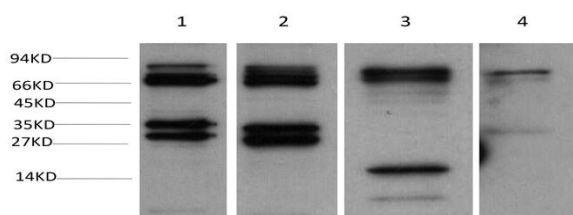


# SGT1/ECD Rabbit pAb

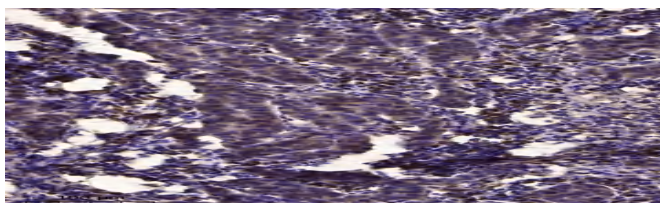
|                                  |   |
|----------------------------------|---|
| <b>Catalog No</b>                | YP-Ab-10317   |
| <b>Isotype</b>                   | IgG   |
| <b>Reactivity</b>                | Human; Mouse;Rat  |
| <b>Applications</b>              | IHC;WB  |
| <b>Gene Name</b>                 | ECD SGT1  |
| <b>Protein Name</b>              | SGT1/ECD  |
| <b>Immunogen</b>                 | Synthesized peptide derived from human SGT1/ECD AA range: 236-286   |
| <b>Specificity</b>               | This antibody detects endogenous levels of SGT1/ECD at Human, Mouse,Rat   |
| <b>Formulation</b>               | Liquid in PBS containing 50% glycerol, 0.5% BSA and 0.81% sodium azide.   |
| <b>Source</b>                    | Polyclonal, Rabbit,IgG  |
| <b>Purification</b>              | The antibody was affinity-purified from rabbit serum by affinity-chromatography using specific immunogen.                         |
| <b>Dilution</b>                  | IHC-p1:50-200 ,WB 1:1000-2000   |
| <b>Concentration</b>             | 1 mg/ml   |
| <b>Purity</b>                    | ≥90%  |
| <b>Storage Stability</b>         | -20°C/1 year  |
| <b>Synonyms</b>                  | Protein SGT1 (hSGT1) (Protein ecdysoneless homolog) (Suppressor of GCR2)  |
| <b>Observed Band</b>             | 73kD  |
| <b>Cell Pathway</b>              | Cytoplasm . Nucleus . Predominantly is located in the cytoplasm. .  |
| <b>Tissue Specificity</b>        | Highly expressed in muscle and heart. Over-expressed in pancreatic and breast cancers.  |
| <b>Function</b>                  |   |
| <b>Background</b>                |   |
| <b>matters needing attention</b> | Avoid repeated freezing and thawing!  |
| <b>Usage suggestions</b>         | This product can be used in immunological reaction related experiments. For more information, please consult technical personnel. |



## Products Images



Western blot analysis of 1)Hela Cell, 2) 293T Cell, 3)Mouse Brain Tissue, 4) Rat Brain Tissue Lysate using SGT1/ECDRabbit polyclonal Antibody diluted at 1:2,000.



Immunohistochemical analysis of paraffin-embedded human Breast cancer. 1, Antibody was diluted at 1:200(4° overnight). 2, Tris-EDTA,pH9.0 was used for antigen retrieval. 3,Secondary antibody was diluted at 1:200(room temperature, 45min).