



# MAP2 (Phospho-Thr1616) Polyclonal Antibody

<b>Catalog No</b>	YP-Ab-10342
<b>Isotype</b>	IgG
<b>Reactivity</b>	Human; Mouse; Rat
<b>Applications</b>	IHC;IF;WB
<b>Gene Name</b>	MAP2
<b>Protein Name</b>	MAP2 (Phospho-Thr1616)
<b>Immunogen</b>	Synthesized peptide derived from human MAP2 (Phospho-Thr1616)
<b>Specificity</b>	This antibody detects endogenous phospho levels of MAP2 (Phospho-Thr1616) at Human:T1616, Mouse:T1620, Rat:T1622
<b>Formulation</b>	Liquid in PBS containing 50% glycerol, 0.5% BSA and 0.02% sodium azide.
<b>Source</b>	Polyclonal, Rabbit,IgG
<b>Purification</b>	The antibody was affinity-purified from rabbit serum by affinity-chromatography using specific immunogen.
<b>Dilution</b>	IHC-p 1:50-200, WB 1:500-2000. IF 1:50-200
<b>Concentration</b>	1 mg/ml
<b>Purity</b>	≥90%
<b>Storage Stability</b>	-20°C/1 year
<b>Synonyms</b>	Microtubule-associated protein 2 (MAP-2)
<b>Observed Band</b>	280kD
<b>Cell Pathway</b>	Cytoplasm, cytoskeleton . Cell projection, dendrite .
<b>Tissue Specificity</b>	Brain,Brain cortex,Epithelium,Pancreas,Testis,
<b>Function</b>	alternative products:Additional isoforms seem to exist,function:The exact function of MAP2 is unknown but MAPs may stabilize the microtubules against depolymerization. They also seem to have a stiffening effect on microtubules.,PTM:MAP2A/c is phosphorylated. Phosphorylated upon DNA damage, probably by ATM or ATR.,similarity:Contains 3 Tau/MAP repeats.,similarity:Contains 4 Tau/MAP repeats.,
<b>Background</b>	This gene encodes a protein that belongs to the microtubule-associated protein family. The proteins of this family are thought to be involved in microtubule assembly, which is an essential step in neurogenesis. The products of similar genes in rat and mouse are neuron-specific cytoskeletal proteins that are enriched in dendrites, implicating a role in determining and stabilizing dendritic shape during neuron development. A number of alternatively spliced variants encoding distinct isoforms have been described. [provided by RefSeq, Jan 2010],

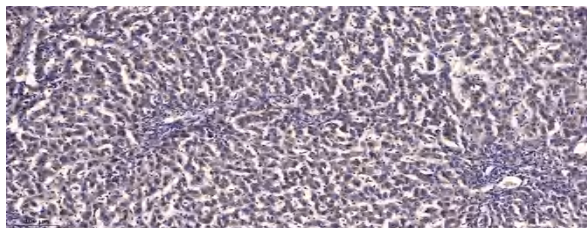
**matters needing attention**

Avoid repeated freezing and thawing!

**Usage suggestions**

This product can be used in immunological reaction related experiments. For more information, please consult technical personnel.

## Products Images



Immunohistochemical analysis of paraffin-embedded human liver cancer. 1, Antibody was diluted at 1:200(4° overnight). 2, Tris-EDTA,pH9.0 was used for antigen retrieval. 3,Secondary antibody was diluted at 1:200(room temperature, 45min).