



CD130/gp130 (Phospho-Ser782) Polyclonal Antibody

Catalog No	YP-Ab-10351
Isotype	IgG
Reactivity	Human; Mouse
Applications	IHC;IF;WB
Gene Name	IL6ST
Protein Name	CD130/gp130 (Phospho-Ser782)
Immunogen	Synthesized peptide derived from human CD130/gp130 (Phospho-Ser782)
Specificity	This antibody detects endogenous phospho levels of CD130/gp130 (Phospho-Ser782) at Human:S782, Mouse:S780
Formulation	Liquid in PBS containing 50% glycerol, 0.5% BSA and 0.02% sodium azide.
Source	Polyclonal, Rabbit,IgG
Purification	The antibody was affinity-purified from rabbit serum by affinity-chromatography using specific immunogen.
Dilution	IHC-p 1:50-200, WB 1:500-2000. IF 1:50-200
Concentration	1 mg/ml
Purity	≥90%
Storage Stability	-20°C/1 year
Synonyms	Interleukin-6 receptor subunit beta (IL-6 receptor subunit beta;IL-6R subunit beta;IL-6R-beta;IL-6RB;CDw130;Interleukin-6 signal transducer;Membrane glycoprotein 130;gp130;Oncostatin-M receptor subunit alpha;CD antigen CD130)
Observed Band	130kD
Cell Pathway	[Isoform 1]: Cell membrane ; Single-pass type I membrane protein .; [Isoform 2]: Secreted .
Tissue Specificity	Found in all the tissues and cell lines examined (PubMed:2261637). Expression not restricted to IL6 responsive cells (PubMed:2261637). ; [Isoform 2]: Expressed in blood serum (at protein level) (PubMed:24629561).
Function	disease:Isoform 2 is an autoantigen found in rheumatoid arthritis (RA) but it is not specific to patients with RA.,domain:The box 1 motif is required for JAK interaction and/or activation.,domain:The WSXWS motif appears to be necessary for proper protein folding and thereby efficient intracellular transport and cell-surface receptor binding.,function:Signal-transducing molecule. The receptor systems for IL6, LIF, OSM, CNTF, IL11, CTF1 and BSF3 can utilize gp130 for initiating signal transmission. Binds to IL6/IL6R (alpha chain) complex, resulting in the formation of high-affinity IL6 binding sites, and transduces the signal. Does not bind IL6. May have a role in embryonic development (By similarity). The type I OSM receptor is capable of transducing OSM-specific signaling events.,induction:Leukemia inhibitory factor (LIF) and Oncostatin-M (OSM) activate the type I OSM receptor while only

**Background**

The protein encoded by this gene is a signal transducer shared by many cytokines, including interleukin 6 (IL6), ciliary neurotrophic factor (CNTF), leukemia inhibitory factor (LIF), and oncostatin M (OSM). This protein functions as a part of the cytokine receptor complex. The activation of this protein is dependent upon the binding of cytokines to their receptors. vIL6, a protein related to IL6 and encoded by the Kaposi sarcoma-associated herpesvirus, can bypass the interleukin 6 receptor (IL6R) and directly activate this protein. Knockout studies in mice suggest that this gene plays a critical role in regulating myocyte apoptosis. Alternatively spliced transcript variants have been described. A related pseudogene has been identified on chromosome 17. [provided by RefSeq, May 2014],

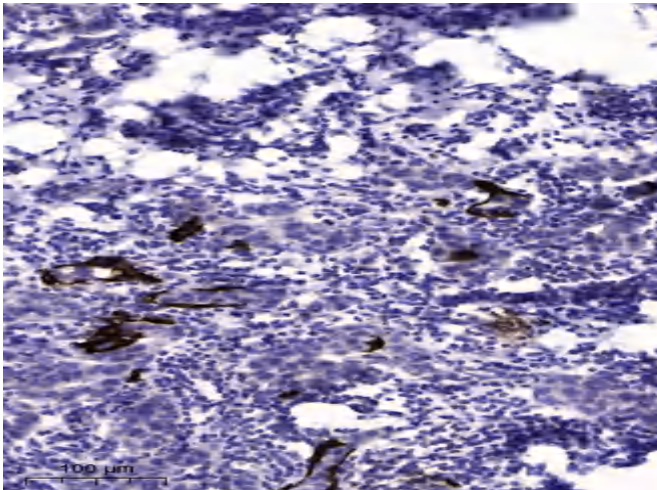
matters needing attention

Avoid repeated freezing and thawing!

Usage suggestions

This product can be used in immunological reaction related experiments. For more information, please consult technical personnel.

Products Images



Immunohistochemical analysis of paraffin-embedded human Breast cancer. 1, Antibody was diluted at 1:200(4° overnight). 2, Tris-EDTA,pH9.0 was used for antigen retrieval. 3,Secondary antibody was diluted at 1:200(room temperature, 45min).