



PZR (phospho-Tyr263) rabbit pAb

Catalog No	YP-Ab-10395
Isotype	IgG
Reactivity	Human;Mouse;Rat
Applications	WB;ELISA;IHC
Gene Name	MPZL1 PZR UNQ849/PRO1787
Protein Name	PZR (Tyr263)
Immunogen	Synthesized phospho peptide around human PZR (Tyr263)
Specificity	This antibody detects endogenous levels of Human Mouse Rat PZR (phospho-Tyr263)
Formulation	Liquid in PBS containing 50% glycerol, 0.5% BSA and 0.02% sodium azide.
Source	Polyclonal, Rabbit,IgG
Purification	The antibody was affinity-purified from rabbit serum by affinity-chromatography using specific immunogen.
Dilution	WB 1:500-2000;IHC-p 1:50-300; ELISA 2000-20000
Concentration	1 mg/ml
Purity	≥90%
Storage Stability	-20°C/1 year
Synonyms	Myelin protein zero-like protein 1 (Protein zero-related)
Observed Band	30kD
Cell Pathway	Membrane ; Single-pass type I membrane protein .
Tissue Specificity	Widely expressed with highest levels in heart, placenta, kidney and pancreas. Isoform 3 is relatively abundant in hematopoietic tissues and fetal liver. Isoform 1 and isoform 3 are expressed in CD14- PB monocytes and pre-B cell progenitors. Isoform 3 appears to be the major isoform in CD34- promyelocytic and promonocytic cells. During differentiation in monocytic cells, the expression level of isoform 3 decreases and that of isoform 1 increases. Isoform 1 is prominent in stromal cells and, to a lesser extent, in umbilical vein endothelial cells and erythroid progenitors. Isoform 2 is expressed in a erythroid progenitor cell line.
Function	domain:Contains 2 copies of a cytoplasmic motif that is referred to as the immunoreceptor tyrosine-based inhibitor motif (ITIM). This motif is involved in modulation of cellular responses. The phosphorylated ITIM motif can bind the SH2 domain of several SH2-containing phosphatases.,function:Cell surface receptor, which is involved in signal transduction processes. Recruits PTPN11/SHP-2 to the cell membrane and is a putative substrate of PTPN11/SHP-2. Is a major receptor for concanavalin A (ConA) and is involved in cellular signaling induced by ConA, which probably includes Src family tyrosine-protein kinases. Isoform 3 seems to have a dominant negative role; it



blocks tyrosine phosphorylation of MPZL1 induced by ConA. Isoform 1, but not isoform 2 and isoform 3, may be involved in regulation of integrin-mediated cell motility.,PTM:N-glycosylated.,PTM:Phosphorylated on tyrosine residues up

Background

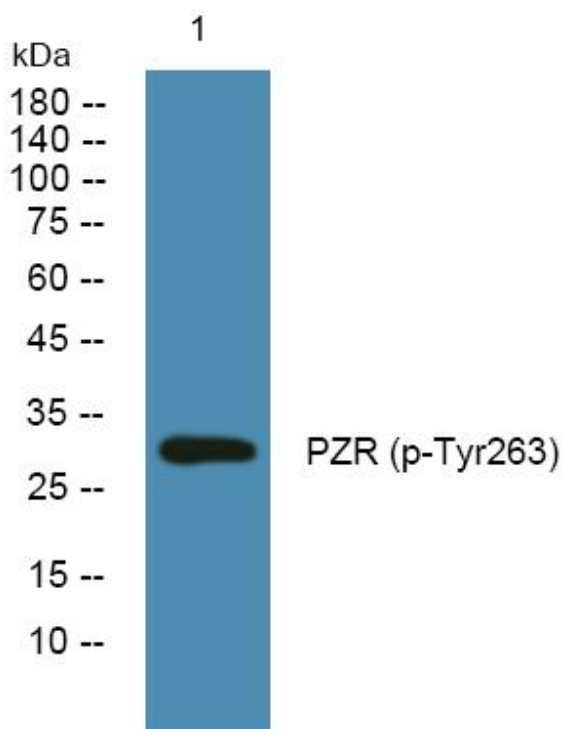
matters needing attention

Avoid repeated freezing and thawing!

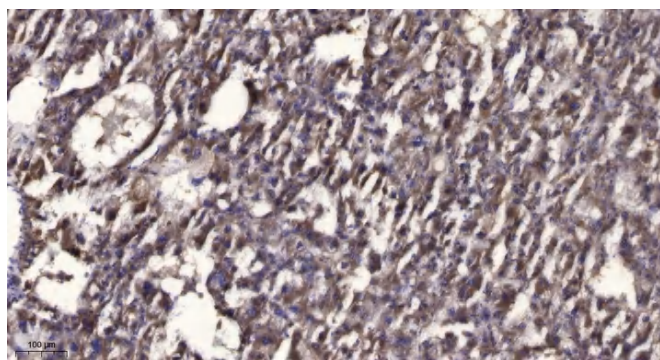
Usage suggestions

This product can be used in immunological reaction related experiments. For more information, please consult technical personnel.

Products Images



Western blot analysis of lysates from SH-SY5Y cells, primary antibody was diluted at 1:1000, 4° over night



Immunohistochemical analysis of paraffin-embedded human liver cancer. 1, Antibody was diluted at 1:200(4° overnight). 2, Tris-EDTA, pH9.0 was used for antigen retrieval. 3, Secondary antibody was diluted at 1:200(room temperature, 45min).