



QIK/QSK (Phospho-Thr175/163) rabbit pAb

Catalog No	YP-Ab-10460
Isotype	IgG
Reactivity	Human; Mouse;Rat
Applications	WB
Gene Name	SIK2 KIAA0781 QIK SNF1LK2
Protein Name	QIK/QSK (Phospho-Thr175/163)
Immunogen	Synthesized peptide derived from human QIK/QSK (Phospho-Thr175/163)
Specificity	This antibody detects endogenous levels of QIK/QSK (Phospho-Thr175/163) at Human, Mouse,Rat
Formulation	Liquid in PBS containing 50% glycerol, and 0.114% sodium azide.
Source	Polyclonal, Rabbit,IgG
Purification	The antibody was affinity-purified from rabbit serum by affinity-chromatography using specific immunogen.
Dilution	WB 1:500-2000
Concentration	1 mg/ml
Purity	≥90%
Storage Stability	-20°C/1 year
Synonyms	Serine/threonine-protein kinase SIK2 (EC 2.7.11.1) (Qin-induced kinase) (Salt-inducible kinase 2) (SIK-2) (Serine/threonine-protein kinase SNF1-like kinase 2)
Observed Band	105kD
Cell Pathway	Cytoplasm . Endoplasmic reticulum membrane .
Tissue Specificity	Brain,Colon,Lung,Testis,
Function	catalytic activity:ATP + a protein = ADP + a phosphoprotein.,cofactor:Magnesium.,enzyme regulation:Activated by phosphorylation on Thr-175 by STK11 in complex with STE20-related adapter-alpha (STRAD alpha) pseudo kinase and CAB39.,function:Phosphorylates 'Ser-794' of IRS1 in insulin-stimulated adipocytes, potentially modulating the efficiency of insulin signal transduction. Inhibits CREB activity by phosphorylating and repressing TORCs, the CREB-specific coactivators.,similarity:Belongs to the protein kinase superfamily. CAMK Ser/Thr protein kinase family. AMPK subfamily.,similarity:Contains 1 protein kinase domain.,similarity:Contains 1 UBA domain.,subunit:Interacts with and phosphorylates TORC2/CRTC2.,
Background	



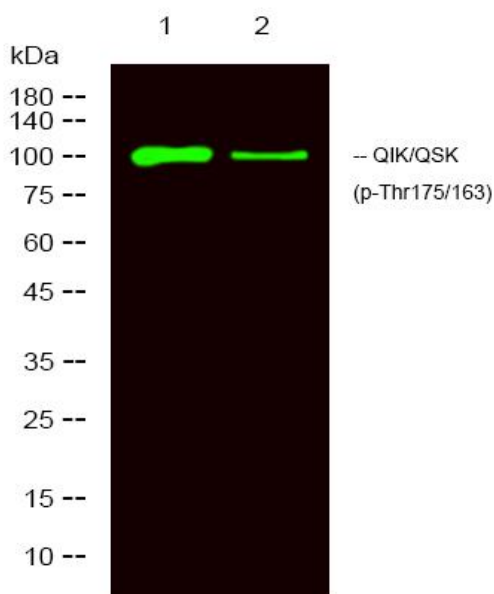
matters needing attention

Avoid repeated freezing and thawing!

Usage suggestions

This product can be used in immunological reaction related experiments. For more information, please consult technical personnel.

Products Images



Western Blot analysis of 1 HeLa, 2 treated with LPS 100ng/mL 20min, using primary antibody at 1:1000 dilution. Secondary antibody(catalog#:RS23920) was diluted at 1:10000