



BAG3 (Phospho-Tyr457) rabbit pAb

| | |
|---------------------------|---|
| Catalog No | YP-Ab-10514 |
| Isotype | IgG |
| Reactivity | Human; Mouse;Rat |
| Applications | WB |
| Gene Name | BAG3 BIS |
| Protein Name | BAG3 (Phospho-Tyr457) |
| Immunogen | Synthesized peptide derived from human BAG3 (Phospho-Tyr457) |
| Specificity | This antibody detects endogenous levels of BAG3 (Phospho-Tyr457) at Human, Mouse,Rat |
| Formulation | Liquid in PBS containing 50% glycerol, and 0.170% sodium azide. |
| Source | Polyclonal, Rabbit,IgG |
| Purification | The antibody was affinity-purified from rabbit serum by affinity-chromatography using specific immunogen. |
| Dilution | WB 1:500-2000 |
| Concentration | 1 mg/ml |
| Purity | ≥90% |
| Storage Stability | -20°C/1 year |
| Synonyms | BAG family molecular chaperone regulator 3 (BAG-3) (Bcl-2-associated athanogene 3) (Bcl-2-binding protein Bis) (Docking protein CAIR-1) |
| Observed Band | |
| Cell Pathway | Nucleus . Cytoplasm . Colocalizes with HSF1 to the nucleus upon heat stress (PubMed:26159920). . |
| Tissue Specificity | Brain,Epithelium,Liver,Lung,Placenta,T-cell,Testis,Tongue, |
| Function | function:Inhibits the chaperone activity of HSP70/HSC70 by promoting substrate release. Has anti-apoptotic activity.,similarity:Contains 1 BAG domain.,similarity:Contains 2 WW domains.,subunit:Binds to the ATPase domain of HSP70/HSC chaperones. Binds to Bcl-2 and PLC-gamma., |
| Background | BAG proteins compete with Hip for binding to the Hsc70/Hsp70 ATPase domain and promote substrate release. All the BAG proteins have an approximately 45-amino acid BAG domain near the C terminus but differ markedly in their N-terminal regions. The protein encoded by this gene contains a WW domain in the N-terminal region and a BAG domain in the C-terminal region. The BAG domains of BAG1, BAG2, and BAG3 interact specifically with the Hsc70 ATPase domain in vitro and in mammalian cells. All 3 proteins bind with high affinity to the ATPase domain of Hsc70 and inhibit its chaperone activity in a Hip-repressible manner. [provided by RefSeq, Jul 2008], |



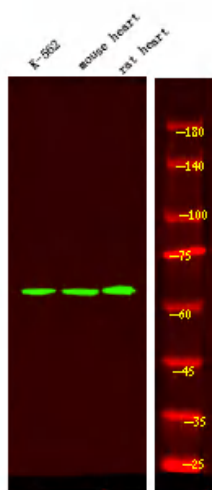
matters needing attention

Avoid repeated freezing and thawing!

Usage suggestions

This product can be used in immunological reaction related experiments. For more information, please consult technical personnel.

Products Images



Western Blot analysis of K-562 mouse heart, rat heart using primary antibody at 1:1000 dilution 4°C, overnight. Secondary antibody(catalog#:RS23920) was diluted at 1:10000 25°C, 1.5hours