



INCENP (Phospho-Thr59) rabbit pAb

Catalog No	YP-Ab-10530
Isotype	IgG
Reactivity	Human; Mouse;Rat
Applications	WB
Gene Name	INCENP
Protein Name	INCENP (Phospho-Thr59)
Immunogen	Synthesized peptide derived from human INCENP (Phospho-Thr59)
Specificity	This antibody detects endogenous levels of INCENP (Phospho-Thr59) at Human, Mouse,Rat
Formulation	Liquid in PBS containing 50% glycerol, and 0.186% sodium azide.
Source	Polyclonal, Rabbit,IgG
Purification	The antibody was affinity-purified from rabbit serum by affinity-chromatography using specific immunogen.
Dilution	WB 1:500-2000
Concentration	1 mg/ml
Purity	≥90%
Storage Stability	-20°C/1 year
Synonyms	Inner centromere protein
Observed Band	
Cell Pathway	Nucleus . Chromosome, centromere . Cytoplasm, cytoskeleton, spindle . Midbody . Chromosome, centromere, kinetochore . Colocalized at synaptonemal complex central element from zygotene up to late pachytene when it begins to relocate to heterochromatic chromocenters. Colocalizes with AURKB at a connecting strand traversing the centromere region and joining sister kinetochores, in metaphase II centromeres. This strand disappears at the metaphase II/anaphase II transition and relocates to the spindle midzone (By similarity). Colocalizes with AURKB at mitotic chromosomes (PubMed:11453556). Localizes to inner kinetochore (PubMed:16760428). Localizes on chromosome arms and inner centromeres from prophase through metaphase and then transferring to the spindle midzone and midbody from anaphase
Tissue Specificity	Epithelium,Lung,Testis,
Function	caution:PubMed:11139336 experiments have been carried out partly in chicken and partly in human.,function:Component of the chromosomal passenger complex (CPC), a complex that acts as a key regulator of mitosis. The CPC complex has essential functions at the centromere in ensuring correct chromosome alignment and segregation and is required for chromatin-induced microtubule stabilization and spindle assembly. Probably acts through association



with AURKB or AURKC. Seems to bind directly to microtubules.,similarity:Belongs to the INCENP family.,subcellular location:Localizes on chromosome arms and inner centromeres from prophase through metaphase and then transferring to the spindle midzone and midbody from anaphase through cytokinesis. Colocalizes with AURKB at mitotic chromosomes.,subunit:Homodimer or heterodimer. Interacts with H2AFZ (By similarity). Interacts with CBX3. Interacts with t

Background

In mammalian cells, 2 broad groups of centromere-interacting proteins have been described: constitutively binding centromere proteins and ‘passenger,’ or transiently interacting, proteins (reviewed by Choo, 1997). The constitutive proteins include CENPA (centromere protein A; MIM 117139), CENPB (MIM 117140), CENPC1 (MIM 117141), and CENPD (MIM 117142). The term ‘passenger proteins’ encompasses a broad collection of proteins that localize to the centromere during specific stages of the cell cycle (Earnshaw and Mackay, 1994 [PubMed 8088460]). These include CENPE (MIM 117143); MCAK (MIM 604538); KID (MIM 603213); cytoplasmic dynein (e.g., MIM 600112); ClIPs (e.g., MIM 179838); and CENPF/mitosin (MIM 600236). The inner centromere proteins (INCENPs) (Earnshaw and Cooke, 1991 [PubMed 1860899]), the initial members of the passenger protein group, display a broad localization alo

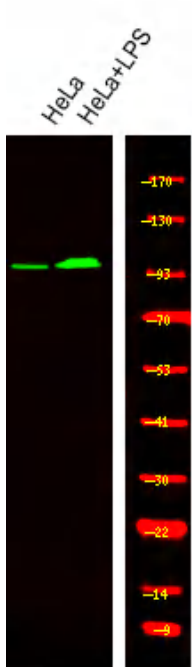
matters needing attention

Avoid repeated freezing and thawing!

Usage suggestions

This product can be used in immunological reaction related experiments. For more information, please consult technical personnel.

Products Images



Western Blot analysis of various,using primary antibody at 1:1000 dilution. Secondary antibody(catalog#:RS23920) was diluted at 1:10000
