



# Retinoic Acid Receptor $\alpha/\beta$ (Phospho-Ser96) rabbit pAb

<b>Catalog No</b>	YP-Ab-10551
<b>Isotype</b>	IgG
<b>Reactivity</b>	Human; Mouse;Rat
<b>Applications</b>	WB
<b>Gene Name</b>	RARA NR1B1
<b>Protein Name</b>	Retinoic Acid Receptor $\alpha/\beta$ (Phospho-Ser96)
<b>Immunogen</b>	Synthesized peptide derived from human Retinoic Acid Receptor $\alpha/\beta$ (Phospho-Ser96)
<b>Specificity</b>	This antibody detects endogenous levels of Retinoic Acid Receptor $\alpha/\beta$ (Phospho-Ser96) at Human, Mouse,Rat
<b>Formulation</b>	Liquid in PBS containing 50% glycerol, and 0.207% sodium azide.
<b>Source</b>	Polyclonal, Rabbit,IgG
<b>Purification</b>	The antibody was affinity-purified from rabbit serum by affinity-chromatography using specific immunogen.
<b>Dilution</b>	WB 1:500-2000
<b>Concentration</b>	1 mg/ml
<b>Purity</b>	$\geq 90\%$
<b>Storage Stability</b>	$-20^{\circ}\text{C}/1$ year
<b>Synonyms</b>	Retinoic acid receptor alpha (RAR-alpha) (Nuclear receptor subfamily 1 group B member 1)
<b>Observed Band</b>	50kD
<b>Cell Pathway</b>	Nucleus . Cytoplasm . Nuclear localization depends on ligand binding, phosphorylation and sumoylation (PubMed:19850744). Translocation to the nucleus in the absence of ligand is dependent on activation of PKC and the downstream MAPK phosphorylation (By similarity). Increased nuclear localization upon pulsatile shear stress (PubMed:28167758). .
<b>Tissue Specificity</b>	Expressed in monocytes.
<b>Function</b>	disease:Chromosomal aberrations involving RARA may be a cause of acute promyelocytic leukemia (APL) [MIM:612376]. Translocation t(11;17)(q32;q21) with ZBTB16/PLZF; translocation t(15;17)(q21;q21) with PML; translocation t(5;17)(q32;q11) with NPM.,domain:Composed of three domains: a modulating N-terminal domain, a DNA-binding domain and a C-terminal steroid-binding domain.,function:This is a receptor for retinoic acid. This metabolite has profound effects on vertebrate development. Retinoic acid is a morphogen and is a powerful teratogen. This receptor controls cell function by directly regulating gene expression.,online information:Retinoic acid receptor entry,PTM:Phosphorylated.



Phosphorylation does not change during cell cycle. Phosphorylation on Ser-77 is crucial for transcriptional activity.,similarity:Belongs to the nuclear hormone receptor family.,similarity:Belongs to the nuclear

### Background

This gene represents a nuclear retinoic acid receptor. The encoded protein, retinoic acid receptor alpha, regulates transcription in a ligand-dependent manner. This gene has been implicated in regulation of development, differentiation, apoptosis, granulopoiesis, and transcription of clock genes. Translocations between this locus and several other loci have been associated with acute promyelocytic leukemia. Alternatively spliced transcript variants have been found for this locus.[provided by RefSeq, Sep 2010],

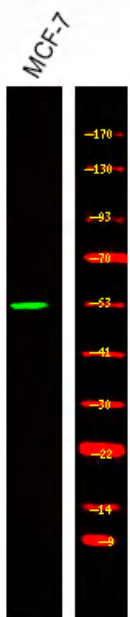
### matters needing attention

Avoid repeated freezing and thawing!

### Usage suggestions

This product can be used in immunological reaction related experiments. For more information, please consult technical personnel.

## Products Images



Western Blot analysis of various,using primary antibody at 1:1000 dilution. Secondary antibody(catalog#:RS23920) was diluted at 1:10000