

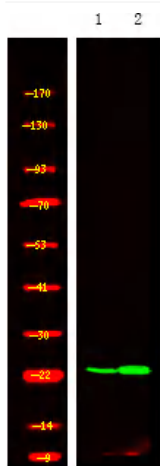


R-Ras (Phospho-Tyr66) rabbit pAb

| | |
|----------------------------------|---|
| Catalog No | YP-Ab-10564 |
| Isotype | IgG |
| Reactivity | Human; Mouse;Rat |
| Applications | WB |
| Gene Name | RRAS |
| Protein Name | R-Ras (Phospho-Tyr66) |
| Immunogen | Synthesized peptide derived from human R-Ras (Phospho-Tyr66) |
| Specificity | This antibody detects endogenous levels of R-Ras (Phospho-Tyr66) at Human, Mouse,Rat |
| Formulation | Liquid in PBS containing 50% glycerol, and 0.220% sodium azide. |
| Source | Polyclonal, Rabbit,IgG |
| Purification | The antibody was affinity-purified from rabbit serum by affinity-chromatography using specific immunogen. |
| Dilution | WB 1:500-2000 |
| Concentration | 1 mg/ml |
| Purity | ≥90% |
| Storage Stability | -20°C/1 year |
| Synonyms | Ras-related protein R-Ras (p23) |
| Observed Band | |
| Cell Pathway | Cell membrane ; Lipid-anchor ; Cytoplasmic side . Inner surface of plasma membrane possibly with attachment requiring acylation of the C-terminal cysteine (By similarity with RAS). |
| Tissue Specificity | Adipocyte,Brain,Uterus, |
| Function | function:Regulates the organization of the actin cytoskeleton.,similarity:Belongs to the small GTPase superfamily. Ras family.,subcellular location:Inner surface of plasma membrane possibly with attachment requiring acylation of the C-terminal cysteine (By similarity with RAS).,subunit:Interacts with PLCE1., |
| Background | The protein encoded by this gene is a small GTPase involved in diverse processes including angiogenesis, vascular homeostasis and regeneration, cell adhesion, and neuronal axon guidance. Mutations in this gene are found in many invasive cancers. [provided by RefSeq, Jul 2015], |
| matters needing attention | Avoid repeated freezing and thawing! |

**Usage suggestions**

This product can be used in immunological reaction related experiments. For more information, please consult technical personnel.

Products Images

Western Blot analysis of A549 cell,2, LPS 100ng/mL 30min treated ,using primary antibody at 1:1000 dilution. Secondary antibody(catalog#:RS23920) was diluted at 1:10000