



# CD238 Polyclonal Antibody

<b>Catalog No</b>	YP-Ab-10584
<b>Isotype</b>	IgG
<b>Reactivity</b>	Human;Rat;Mouse;
<b>Applications</b>	WB;ELISA
<b>Gene Name</b>	KEL
<b>Protein Name</b>	CD238
<b>Immunogen</b>	The antiserum was produced against synthesized peptide derived from the Internal region of human KEL. AA range:351-400
<b>Specificity</b>	CD238 Polyclonal Antibody detects endogenous levels of CD238
<b>Formulation</b>	Liquid in PBS containing 50% glycerol, 0.5% BSA and 0.02% sodium azide.
<b>Source</b>	Polyclonal, Rabbit,IgG
<b>Purification</b>	The antibody was affinity-purified from rabbit antiserum by affinity-chromatography using epitope-specific immunogen.
<b>Dilution</b>	WB 1:500-2000, ELISA 1:10000-20000
<b>Concentration</b>	1 mg/ml
<b>Purity</b>	≥90%
<b>Storage Stability</b>	-20°C/1 year
<b>Synonyms</b>	Kell blood group, metallo-endopeptidase
<b>Observed Band</b>	82kD
<b>Cell Pathway</b>	Cell membrane; Single-pass type II membrane protein. Spans the erythrocyte membrane, and is attached to the underlying cytoskeleton.
<b>Tissue Specificity</b>	Expressed at high levels in erythrocytes and testis (in Sertoli cells), and, at lower levels, in skeletal muscle, tonsils (in follicular dendritic cells), lymph node, spleen and appendix (at protein level). Also expressed in many adult and fetal nonerythroid tissues, including brain, spleen, lymph nodes and bone marrow.
<b>Function</b>	cofactor: Binds 1 zinc ion per subunit.,function: Zinc endopeptidase with endothelin-3-converting enzyme activity.,online information: Blood group antigen gene mutation database,polymorphism: KEL is responsible for the Kell blood group system. The molecular basis of the K=KEL1/k=KEL2 blood group antigens is a single variation in position 193; Thr-193 corresponds to KEL2 and Met-193 to KEL1. The molecular basis of the Kpa=KEL3/Kpb=KEL4/Kpc=KEL21 blood group antigens is a single variation in position 281; Arg-281 corresponds to KEL4, Trp-281 to KEL3 and Gin-281 to KEL21. The molecular basis of the Jsa=KEL6/Jsb=KEL7 blood group antigens is a single variation in position 597; Leu-597 corresponds to KEL7 and Pro-597 to KEL6. The molecular basis of the KEL11/KEL17 blood group antigens is a single variation in position 302; Val-302 corresponds to KEL11 and Ala-302 to KEL17. The molecular basis of t

**Background**

This gene encodes a type II transmembrane glycoprotein that is the highly polymorphic Kell blood group antigen. The Kell glycoprotein links via a single disulfide bond to the XK membrane protein that carries the Kx antigen. The encoded protein contains sequence and structural similarity to members of the neprilysin (M13) family of zinc endopeptidases. [provided by RefSeq, Jul 2008],

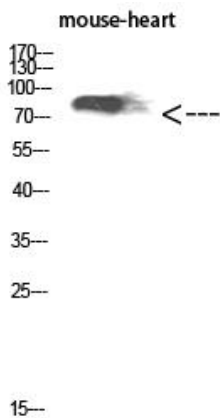
**matters needing attention**

Avoid repeated freezing and thawing!

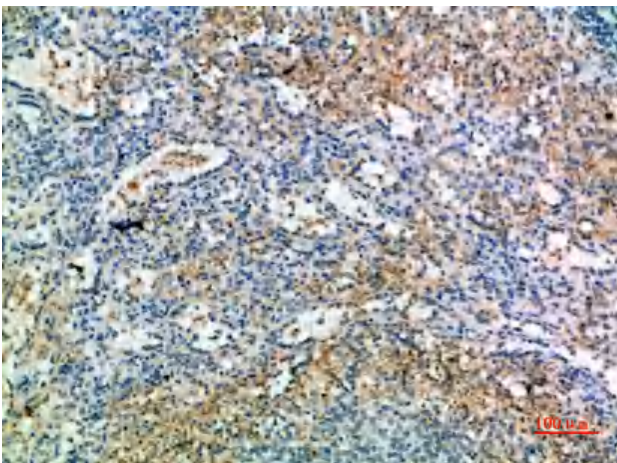
**Usage suggestions**

This product can be used in immunological reaction related experiments. For more information, please consult technical personnel.

## Products Images



Western Blot analysis of mouse-heart cells using CD238 Polyclonal Antibody diluted at 1:1000. Secondary antibody(catalog#:RS0002) was diluted at 1:20000



Immunohistochemical analysis of paraffin-embedded human-spleen, antibody was diluted at 1:200