



NOP56 Polyclonal Antibody

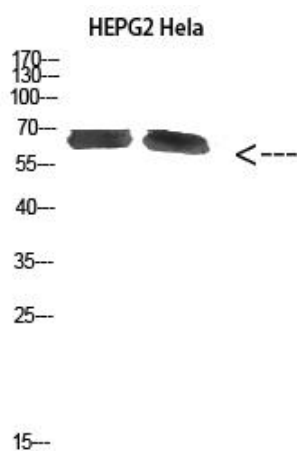
Catalog No	YP-Ab-10602
Isotype	IgG
Reactivity	Human;Mouse;Rat
Applications	WB;IHC;IF;ELISA
Gene Name	NOP56
Protein Name	NOP56
Immunogen	Synthesized peptide derived from NOP56 at AA range: 191-240
Specificity	NOP56 Polyclonal Antibody detects endogenous levels of NOP56
Formulation	Liquid in PBS containing 50% glycerol, 0.5% BSA and 0.02% sodium azide.
Source	Polyclonal, Rabbit,IgG
Purification	The antibody was affinity-purified from rabbit antiserum by affinity-chromatography using epitope-specific immunogen.
Dilution	WB: 1/500 - 1/2000. IHC-p: 1:100-1:300. ELISA: 1/10000.. IF 1:50-200
Concentration	1 mg/ml
Purity	≥90%
Storage Stability	-20°C/1 year
Synonyms	Nucleolar protein 56 (Nucleolar protein 5A)
Observed Band	65kD
Cell Pathway	Nucleus, nucleolus . Cytoplasm . Nucleus, nucleoplasm .
Tissue Specificity	Brain,Cervix carcinoma,Epithelium,Uterus,
Function	function:Required for 60S ribosomal subunit biogenesis.,similarity:Belongs to the NOP5/NOP56 family.,similarity:Contains 1 Nop domain.,subunit:Interacts with NOP1 and NOP58.,
Background	Nop56p is a yeast nucleolar protein that is part of a complex with the nucleolar proteins Nop58p and fibrillarin. Nop56p is required for assembly of the 60S ribosomal subunit and is involved in pre-rRNA processing. The protein encoded by this gene is similar in sequence to Nop56p and is also found in the nucleolus. Expansion of a GGCCTG repeat from 3-8 copies to 1500-2500 copies in an intron of this gene results in spinocerebellar ataxia 36. Multiple transcript variants encoding several different isoforms have been found for this gene, but the full-length nature of most of them has not been determined. [provided by RefSeq, Jul 2016],
matters needing attention	Avoid repeated freezing and thawing!

**Usage suggestions**

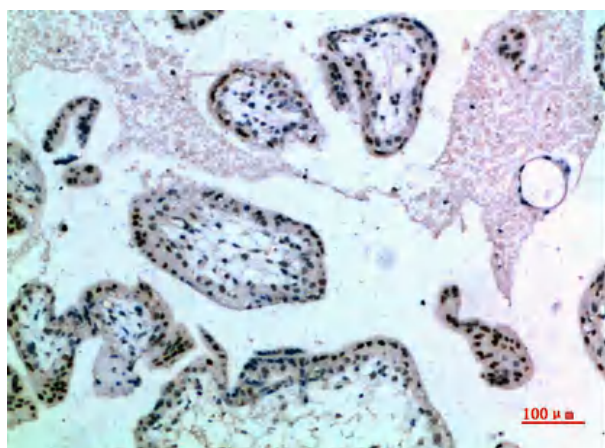
This product can be used in immunological reaction related experiments. For more information, please consult technical personnel.



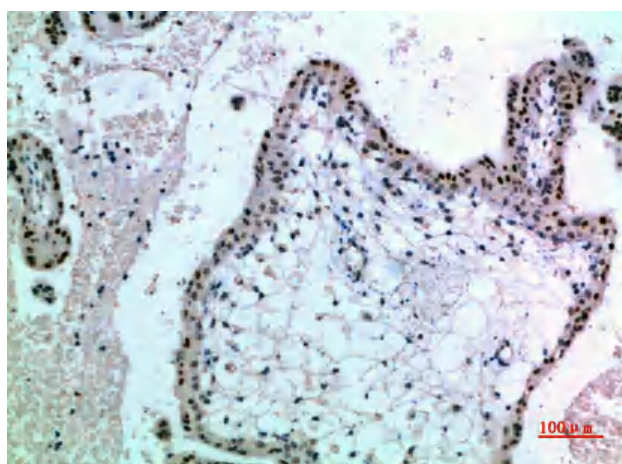
Products Images



Western Blot analysis of HEPG2 Hela cells using NOP56 Polyclonal Antibody diluted at 1:1000. Secondary antibody(catalog#:RS0002) was diluted at 1:20000



Immunohistochemical analysis of paraffin-embedded human-placenta, antibody was diluted at 1:200



Immunohistochemical analysis of paraffin-embedded human-placenta, antibody was diluted at 1:200