

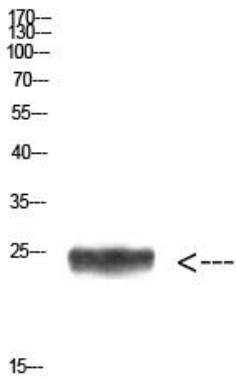


# Imp3 Polyclonal Antibody

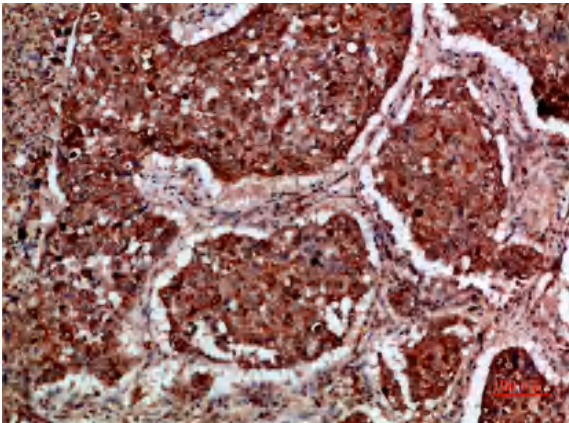
<b>Catalog No</b>	YP-Ab-10618
<b>Isotype</b>	IgG
<b>Reactivity</b>	Human;Mouse;Rat
<b>Applications</b>	WB;ELISA
<b>Gene Name</b>	IMP3 C15orf12 MRPS4
<b>Protein Name</b>	IMP3, U3 small nucleolar ribonucleoprotein, homolog (yeast)
<b>Immunogen</b>	Synthetic peptide from human protein at AA range: 135-184
<b>Specificity</b>	The antibody detects endogenous Imp3 protein
<b>Formulation</b>	Liquid in PBS containing 50% glycerol, 0.5% BSA and 0.02% sodium azide.
<b>Source</b>	Polyclonal, Rabbit,IgG
<b>Purification</b>	The antibody was affinity-purified from rabbit antiserum by affinity-chromatography using epitope-specific immunogen.
<b>Dilution</b>	WB 1:500-2000, ELISA 1:10000-20000
<b>Concentration</b>	1 mg/ml
<b>Purity</b>	≥90%
<b>Storage Stability</b>	-20°C/1 year
<b>Synonyms</b>	IMP3 C15orf12 MRPS4
<b>Observed Band</b>	25kD
<b>Cell Pathway</b>	Nucleus, nucleolus .
<b>Tissue Specificity</b>	Eye,Placenta,Uterus,
<b>Function</b>	function:Component of the 60-80S U3 small nucleolar ribonucleoprotein (U3 snoRNP). Required for the early cleavages during pre-18S ribosomal RNA processing.,similarity:Belongs to the ribosomal protein S4P family.,similarity:Contains 1 S4 RNA-binding domain.,subunit:Component of a heterotrimeric complex containing IMP3, IMP4 and MPHOSPH10. Interacts with MPHOSPH10.,
<b>Background</b>	This gene encodes the human homolog of the yeast Imp3 protein. The protein localizes to the nucleoli and interacts with the U3 snoRNP complex. The protein contains an S4 domain. [provided by RefSeq, Jul 2008],
<b>matters needing attention</b>	Avoid repeated freezing and thawing!
<b>Usage suggestions</b>	This product can be used in immunological reaction related experiments. For more information, please consult technical personnel.



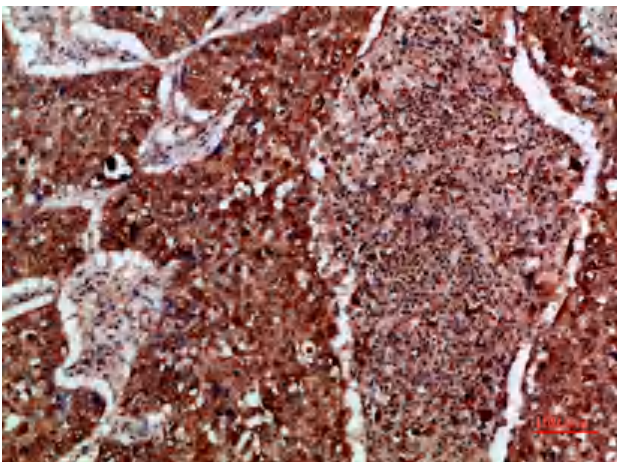
## Products Images



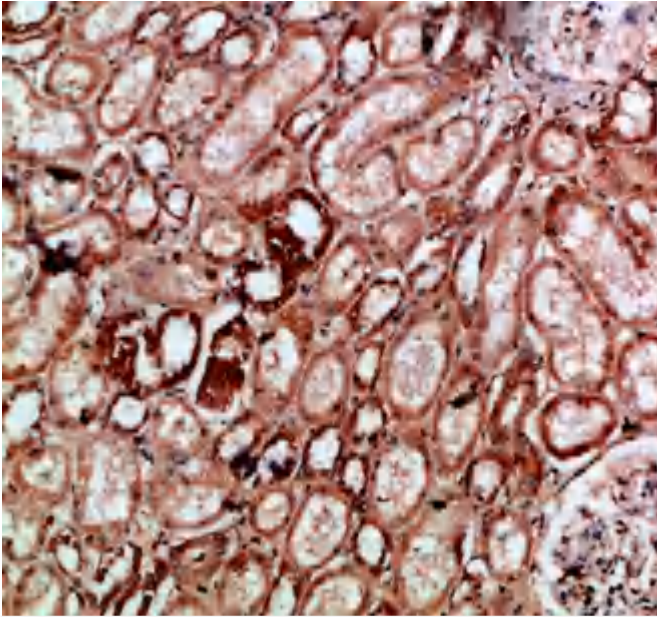
Western Blot analysis of HEPG2 cells using Antibody diluted at 1000. Secondary antibody(catalog#:RS0002) was diluted at 1:20000



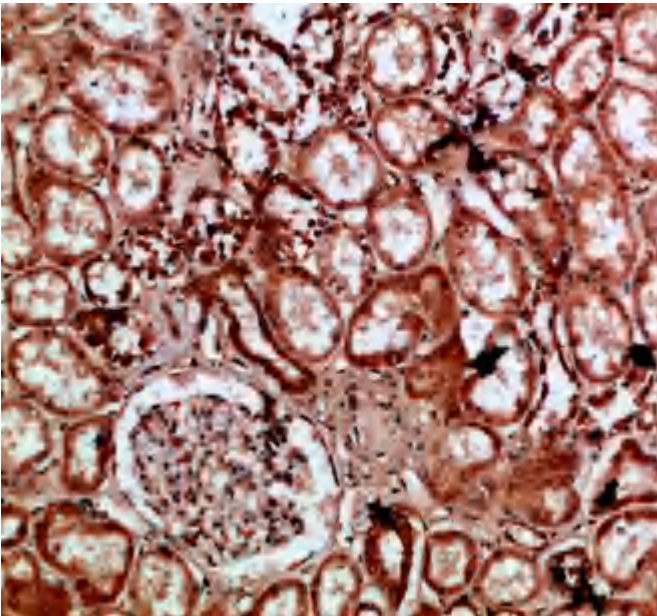
Immunohistochemical analysis of paraffin-embedded human-lung-cancer, antibody was diluted at 1:200



Immunohistochemical analysis of paraffin-embedded human-lung-cancer, antibody was diluted at 1:200



Immunohistochemical analysis of paraffin-embedded human-kidney, antibody was diluted at 1:200



Immunohistochemical analysis of paraffin-embedded human-kidney, antibody was diluted at 1:200