



IRS2 Polyclonal Antibody

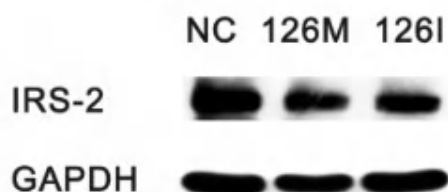
Catalog No	YP-Ab-10634
Isotype	IgG
Reactivity	Human;Rat;Mouse;
Applications	WB;ELISA
Gene Name	IRS2
Protein Name	insulin receptor substrate 2
Immunogen	Synthetic peptide from human protein at AA range: 660-700
Specificity	The antibody detects endogenous IRS2 protein
Formulation	Liquid in PBS containing 50% glycerol, 0.5% BSA and 0.02% sodium azide.
Source	Polyclonal, Rabbit,IgG
Purification	The antibody was affinity-purified from rabbit antiserum by affinity-chromatography using epitope-specific immunogen.
Dilution	WB 1:500-2000, ELISA 1:10000-20000
Concentration	1 mg/ml
Purity	≥90%
Storage Stability	-20°C/1 year
Synonyms	IRS2
Observed Band	170kD
Cell Pathway	Cytoplasm, cytosol .
Tissue Specificity	Blood,Epithelium,Platelet,
Function	function:May mediate the control of various cellular processes by insulin.,PTM:Phosphorylated upon DNA damage, probably by ATM or ATR.,similarity:Contains 1 IRS-type PTB domain.,similarity:Contains 1 PH domain.,
Background	This gene encodes the insulin receptor substrate 2, a cytoplasmic signaling molecule that mediates effects of insulin, insulin-like growth factor 1, and other cytokines by acting as a molecular adaptor between diverse receptor tyrosine kinases and downstream effectors. The product of this gene is phosphorylated by the insulin receptor tyrosine kinase upon receptor stimulation, as well as by an interleukin 4 receptor-associated kinase in response to IL4 treatment. [provided by RefSeq, Jul 2008],
matters needing attention	Avoid repeated freezing and thawing!



Usage suggestions

This product can be used in immunological reaction related experiments. For more information, please consult technical personnel.

Products Images



Tao, Hong, et al. "MiR-126 suppresses the glucose-stimulated proliferation via IRS-2 in INS-1 β cells." PloS one 11.2 (2016): e0149954.



Western Blot analysis of HEPG2, HELA cells using Antibody diluted at 500. Secondary antibody(catalog#:RS0002) was diluted at 1:20000