



NT-3 Polyclonal Antibody

Catalog No	YP-Ab-10660
Isotype	IgG
Reactivity	Human;Mouse;Rat
Applications	IHC;IF;ELISA
Gene Name	NTF3
Protein Name	Neurotrophin-3 (NT-3) (HDNF) (Nerve growth factor 2) (NGF-2) (Neurotrophic factor)
Immunogen	Synthetic peptide from human protein at AA range: 180-230
Specificity	The antibody detects endogenous NT-3
Formulation	Liquid in PBS containing 50% glycerol, 0.5% BSA and 0.02% sodium azide.
Source	Polyclonal, Rabbit,IgG
Purification	The antibody was affinity-purified from rabbit antiserum by affinity-chromatography using epitope-specific immunogen.
Dilution	IHC-p 1:50-200, ELISA 1:10000-20000. IF 1:50-200
Concentration	1 mg/ml
Purity	≥90%
Storage Stability	-20°C/1 year
Synonyms	Neurotrophin-3 (NT-3;HDNF;Nerve growth factor 2;NGF-2;Neurotrophic factor)
Observed Band	
Cell Pathway	Secreted.
Tissue Specificity	Brain and peripheral tissues.
Function	function:Seems to promotes the survival of visceral and proprioceptive sensory neurons.,polymorphism:Variant Glu-76 (frequently reported as Glu-63) was thought to be associated with severe forms of schizophrenia. This does not seem to be the case.,similarity:Belongs to the NGF-beta family.,tissue specificity:Brain and peripheral tissues.,
Background	The protein encoded by this gene is a member of the neurotrophin family, that controls survival and differentiation of mammalian neurons. This protein is closely related to both nerve growth factor and brain-derived neurotrophic factor. It may be involved in the maintenance of the adult nervous system, and may affect development of neurons in the embryo when it is expressed in human placenta. NTF3-deficient mice generated by gene targeting display severe movement defects of the limbs. The mature peptide of this protein is identical in all mammals examined including human, pig, rat and mouse. [provided by RefSeq, Jul 2008],



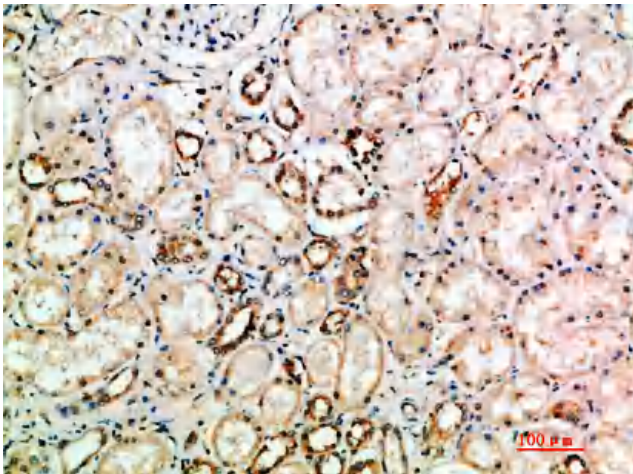
matters needing attention

Avoid repeated freezing and thawing!

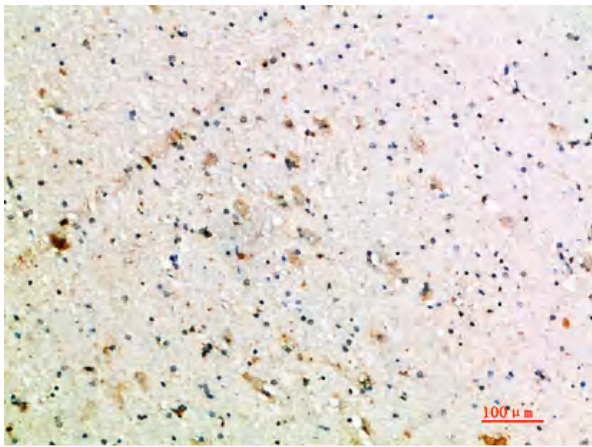
Usage suggestions

This product can be used in immunological reaction related experiments. For more information, please consult technical personnel.

Products Images



Immunohistochemical analysis of paraffin-embedded human-kidney, antibody was diluted at 1:200



Immunohistochemical analysis of paraffin-embedded human-brain, antibody was diluted at 1:200