



# CD109 Polyclonal Antibody

<b>Catalog No</b>	YP-Ab-10668
<b>Isotype</b>	IgG
<b>Reactivity</b>	Human;Rat;Mouse;
<b>Applications</b>	IHC;IF;ELISA
<b>Gene Name</b>	CD109 CPAMD7
<b>Protein Name</b>	CD109 antigen (150 kDa TGF-beta-1-binding protein) (C3 and PZP-like alpha-2-macroglobulin domain-containing protein 7) (Platelet-specific Gov antigen) (p180) (r150) (CD antigen CD109)
<b>Immunogen</b>	Synthetic peptide from human protein at AA range: 751-800
<b>Specificity</b>	The antibody detects endogenous CD109
<b>Formulation</b>	Liquid in PBS containing 50% glycerol, 0.5% BSA and 0.02% sodium azide.
<b>Source</b>	Polyclonal, Rabbit,IgG
<b>Purification</b>	The antibody was affinity-purified from rabbit antiserum by affinity-chromatography using epitope-specific immunogen.
<b>Dilution</b>	IHC-p 1:50-200, ELISA 1:10000-20000. IF 1:50-200
<b>Concentration</b>	1 mg/ml
<b>Purity</b>	≥90%
<b>Storage Stability</b>	-20°C/1 year
<b>Synonyms</b>	CD109 antigen (150 kDa TGF-beta-1-binding protein;C3 and PZP-like alpha-2-macroglobulin domain-containing protein 7;Platelet-specific Gov antigen;p180;r150;CD antigen CD109)
<b>Observed Band</b>	
<b>Cell Pathway</b>	Cell membrane ; Lipid-anchor, GPI-anchor .
<b>Tissue Specificity</b>	Widely expressed with high level in uterus, aorta, heart, lung, trachea, placenta and in fetal heart, kidney, liver, spleen and lung. Expressed by CD34(+) acute myeloid leukemia cell lines, T-cell lines, activated T-lymphoblasts, endothelial cells and activated platelets. Isoform 4 is expressed in placenta. Isoform 1 is expressed in keratinocytes and placenta.
<b>Function</b>	function:Modulates negatively TGFB1 signaling in keratinocytes.,polymorphism:The Gov(b) variant in position 703 defines the Gov alloantigenic determinants.,PTM:2 forms of 150 (p150) and 120 kDa (p120) exist due to proteolytic degradation from a 180 kDa form.,PTM:N-glycosylated.,similarity:Belongs to the protease inhibitor I39 (alpha-2-macroglobulin) family.,subunit:Heterodimer; disulfide-linked. Interacts with TGFB1 and TGFBR1. Forms a heteromeric complex with TGFBR1, TGFBR2 and TGFBR3 in a ligand-independent manner.,tissue specificity:Widely expressed with high level in uterus, aorta, heart, lung, trachea, placenta and in fetal heart,



kidney, liver, spleen and lung. Expressed by CD34(+) acute myeloid leukemia cell lines, T-cell lines, activated T lymphoblasts, endothelial cells and activated platelets. Isoform 5 is expressed in placenta. Isoform 1 is expressed in keratinocytes and placenta

**Background**

This gene encodes a glycosyl phosphatidylinositol (GPI)-linked glycoprotein that localizes to the surface of platelets, activated T-cells, and endothelial cells. The protein binds to and negatively regulates signalling by transforming growth factor beta (TGF-beta). Multiple transcript variants encoding different isoforms have been found for this gene. [provided by RefSeq, Apr 2014],

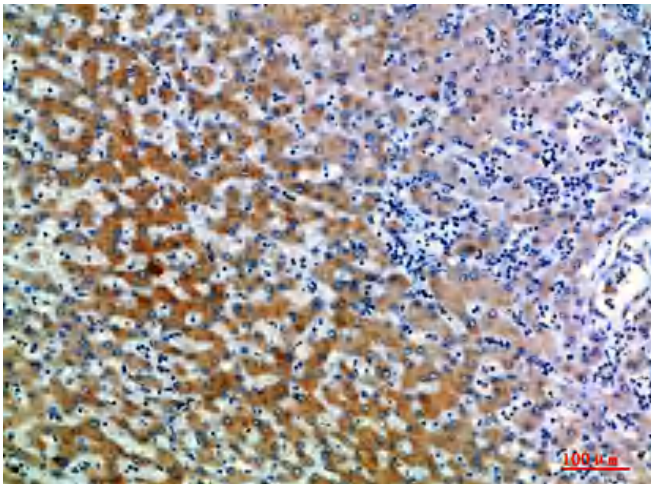
**matters needing attention**

Avoid repeated freezing and thawing!

**Usage suggestions**

This product can be used in immunological reaction related experiments. For more information, please consult technical personnel.

**Products Images**



Immunohistochemical analysis of paraffin-embedded human-liver, antibody was diluted at 1:200