



ENA-78 Polyclonal Antibody

Catalog No	YP-Ab-10692
Isotype	IgG
Reactivity	Human;Rat;Mouse;
Applications	IHC;IF;ELISA
Gene Name	CXCL5 ENA78 SCYB5
Protein Name	C-X-C motif chemokine 5 (ENA-78(1-78)) (Epithelial-derived neutrophil-activating protein 78) (Neutrophil-activating peptide ENA-78) (Small-inducible cytokine B5) [Cleaved into: ENA-78(8-78); ENA-78(9-
Immunogen	Synthetic peptide from human protein at AA range: 65-114
Specificity	The antibody detects endogenous ENA-78
Formulation	Liquid in PBS containing 50% glycerol, 0.5% BSA and 0.02% sodium azide.
Source	Polyclonal, Rabbit,IgG
Purification	The antibody was affinity-purified from rabbit antiserum by affinity-chromatography using epitope-specific immunogen.
Dilution	IHC-p 1:50-200, ELISA 1:10000-20000. IF 1:50-200
Concentration	1 mg/ml
Purity	≥90%
Storage Stability	-20°C/1 year
Synonyms	C-X-C motif chemokine 5 (ENA-78(1-78));Epithelial-derived neutrophil-activating protein 78;Neutrophil-activating peptide ENA-78;Small-inducible cytokine B5) [Cleaved into: ENA-78(8-78); ENA-78(9-78)]
Observed Band	
Cell Pathway	Secreted.
Tissue Specificity	Bladder,Epithelium,Kidney,Peripheral blood monocyte,Platelet,
Function	function:Involved in neutrophil activation. In vitro, ENA-78(8-78) and ENA-78(9-78) show a threefold higher chemotactic activity for neutrophil granulocytes.,online information:CXCL5 entry,PTM:N-terminal processed forms ENA-78(8-78) and ENA-78(9-78) are produced by proteolytic cleavage after secretion from peripheral blood monocytes.,similarity:Belongs to the intercrine alpha (chemokine CxC) family.,
Background	This gene encodes a protein that is a member of the CXC subfamily of chemokines. Chemokines, which recruit and activate leukocytes, are classified by function (inflammatory or homeostatic) or by structure. This protein is proposed to bind the G-protein coupled receptor chemokine (C-X-C motif) receptor 2 to recruit neutrophils, to promote angiogenesis and to remodel connective tissues. This protein is thought to play a role in cancer cell proliferation, migration, and invasion.



[provided by RefSeq, May 2013],

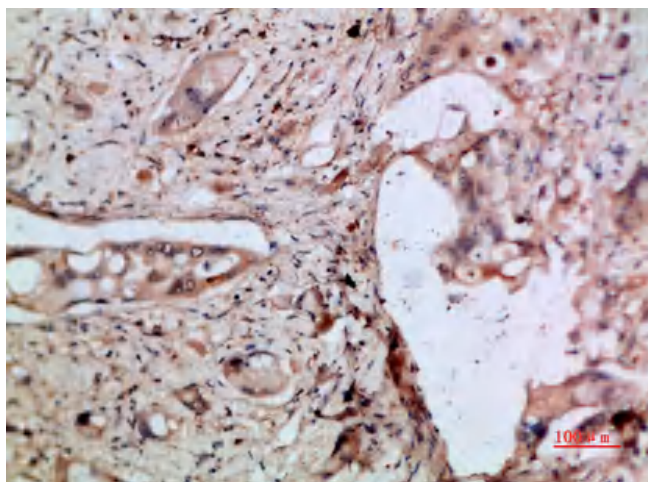
matters needing attention

Avoid repeated freezing and thawing!

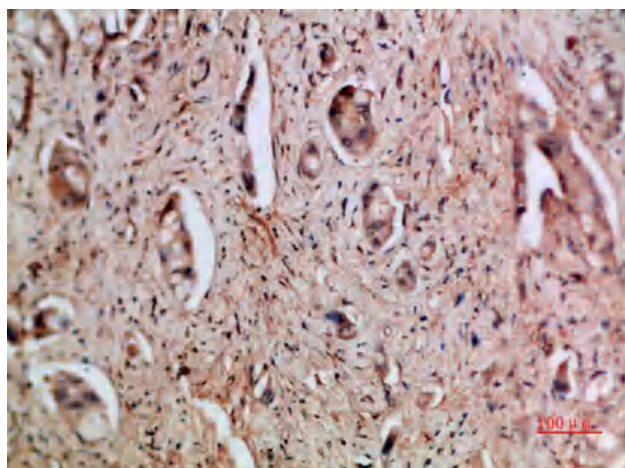
Usage suggestions

This product can be used in immunological reaction related experiments. For more information, please consult technical personnel.

Products Images



Immunohistochemical analysis of paraffin-embedded human-pancreas-cancer, antibody was diluted at 1:200



Immunohistochemical analysis of paraffin-embedded human-pancreas-cancer, antibody was diluted at 1:200