



# GRB7 Polyclonal Antibody

<b>Catalog No</b>	YP-Ab-10729
<b>Isotype</b>	IgG
<b>Reactivity</b>	Human;Mouse;Rat
<b>Applications</b>	IHC;IF;ELISA
<b>Gene Name</b>	GRB7
<b>Protein Name</b>	Growth factor receptor-bound protein 7 (B47) (Epidermal growth factor receptor GRB-7) (GRB7 adapter protein)
<b>Immunogen</b>	Synthetic peptide from human protein at AA range: 30-100
<b>Specificity</b>	The antibody detects endogenous GRB7
<b>Formulation</b>	Liquid in PBS containing 50% glycerol, 0.5% BSA and 0.02% sodium azide.
<b>Source</b>	Polyclonal, Rabbit,IgG
<b>Purification</b>	The antibody was affinity-purified from rabbit antiserum by affinity-chromatography using epitope-specific immunogen.
<b>Dilution</b>	IHC-p 1:50-200, ELISA 1:10000-20000. IF 1:50-200
<b>Concentration</b>	1 mg/ml
<b>Purity</b>	≥90%
<b>Storage Stability</b>	-20°C/1 year
<b>Synonyms</b>	Growth factor receptor-bound protein 7 (B47;Epidermal growth factor receptor GRB-7;GRB7 adapter protein)
<b>Observed Band</b>	
<b>Cell Pathway</b>	Cytoplasm . Cell junction, focal adhesion . Cell membrane; Peripheral membrane protein; Cytoplasmic side . Cytoplasmic granule . Cell projection . Predominantly cytoplasmic. Detected in stress granules, where mRNA is stored under stress conditions. .
<b>Tissue Specificity</b>	Liver,Lung,Oesophageal carcinoma,Thalamus,
<b>Function</b>	alternative products:At least 2 isoforms are produced,function:Interacts with the cytoplasmic domain of the epidermal growth factor receptor which is then inhibited. The interaction is mediated by the SH2 domain. Also binds to ERBB2.,PTM:Phosphorylated on tyrosine residues.,similarity:Belongs to the GRB7/10/14 family.,similarity:Contains 1 PH domain.,similarity:Contains 1 Ras-associating domain.,similarity:Contains 1 SH2 domain.,subunit:Interacts with RND1.,
<b>Background</b>	The product of this gene belongs to a small family of adapter proteins that are known to interact with a number of receptor tyrosine kinases and signaling molecules. This gene encodes a growth factor receptor-binding protein that interacts with epidermal growth factor receptor (EGFR) and ephrin receptors. The protein plays a role in the integrin signaling pathway and cell migration by binding



with focal adhesion kinase (FAK). Several transcript variants encoding two different isoforms have been found for this gene. [provided by RefSeq, Jun 2011],

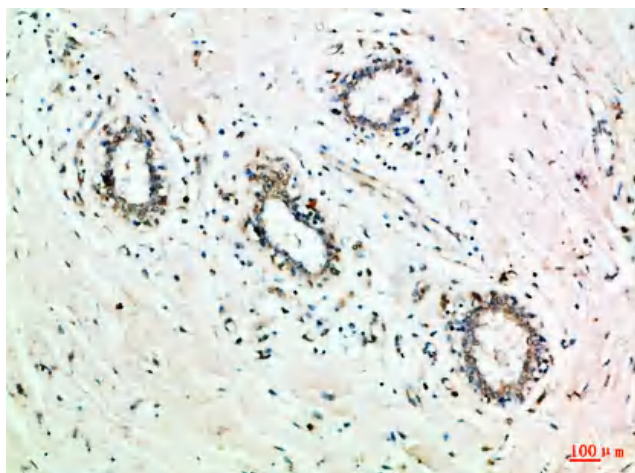
**matters needing attention**

Avoid repeated freezing and thawing!

**Usage suggestions**

This product can be used in immunological reaction related experiments. For more information, please consult technical personnel.

**Products Images**



Immunohistochemical analysis of paraffin-embedded Human-breast, antibody was diluted at 1:100