



MCP-3 Polyclonal Antibody

Catalog No	YP-Ab-10746
Isotype	IgG
Reactivity	Human;Rat;Mouse;
Applications	IHC;IF;ELISA
Gene Name	CCL7 MCP3 SCYA6 SCYA7
Protein Name	C-C motif chemokine 7 (Monocyte chemoattractant protein 3) (Monocyte chemotactic protein 3) (MCP-3) (NC28) (Small-inducible cytokine A7)
Immunogen	Synthetic peptide from human protein at AA range: 50-99
Specificity	The antibody detects endogenous MCP-3
Formulation	Liquid in PBS containing 50% glycerol, 0.5% BSA and 0.02% sodium azide.
Source	Polyclonal, Rabbit,IgG
Purification	The antibody was affinity-purified from rabbit antiserum by affinity-chromatography using epitope-specific immunogen.
Dilution	IHC-p 1:50-200, ELISA 1:10000-20000. IF 1:50-200
Concentration	1 mg/ml
Purity	≥90%
Storage Stability	-20°C/1 year
Synonyms	C-C motif chemokine 7 (Monocyte chemoattractant protein 3;Monocyte chemotactic protein 3;MCP-3;NC28;Small-inducible cytokine A7)
Observed Band	
Cell Pathway	Secreted.
Tissue Specificity	Blood,Colon,Osteosarcoma,
Function	function:Chemotactic factor that attracts monocytes and eosinophils, but not neutrophils. Augments monocyte anti-tumor activity. Also induces the release of gelatinase B. This protein can bind heparin. Binds to CCR1, CCR2 and CCR3.,online information:CCL7 entry,PTM:O-glycosylated.,similarity:Belongs to the intercrine beta (chemokine CC) family.,subunit:Monomer.,
Background	This gene encodes monocyte chemotactic protein 3, a secreted chemokine which attracts macrophages during inflammation and metastasis. It is a member of the C-C subfamily of chemokines which are characterized by having two adjacent cysteine residues. The protein is an in vivo substrate of matrix metalloproteinase 2, an enzyme which degrades components of the extracellular matrix. This gene is part of a cluster of C-C chemokine family members on chromosome 17q. [provided by RefSeq, Jul 2008],

**matters needing attention**

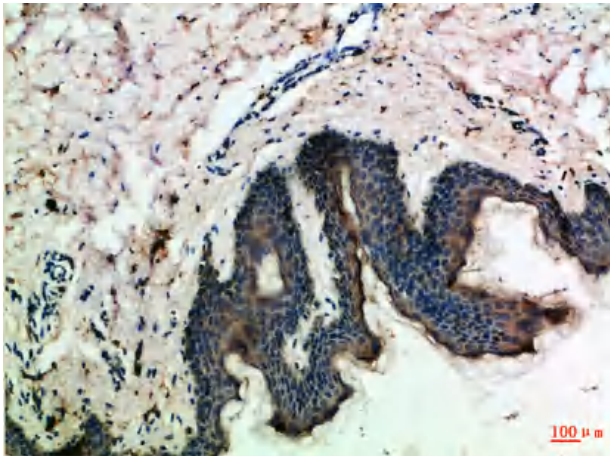
Avoid repeated freezing and thawing!

Usage suggestions

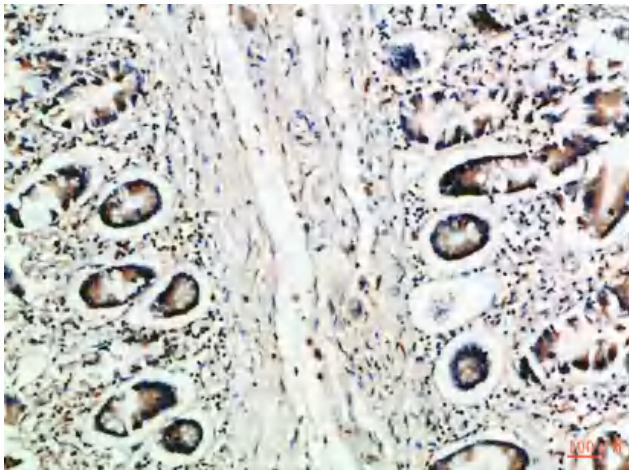
This product can be used in immunological reaction related experiments. For more information, please consult technical personnel.



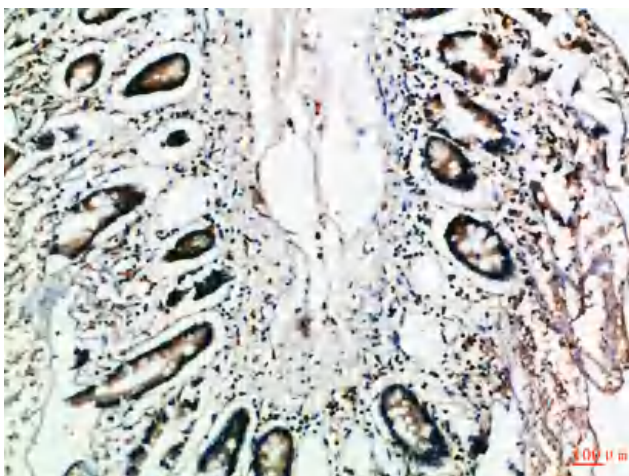
Products Images



Immunohistochemical analysis of paraffin-embedded Human-skin, antibody was diluted at 1:100



Immunohistochemical analysis of paraffin-embedded Human-colon, antibody was diluted at 1:100



Immunohistochemical analysis of paraffin-embedded Human-colon, antibody was diluted at 1:100