



IL-17F Polyclonal Antibody

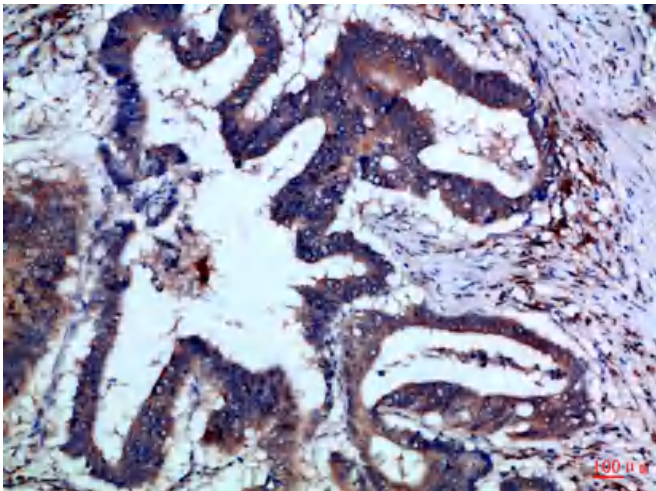
Catalog No	YP-Ab-10747
Isotype	IgG
Reactivity	Human;Rat;Mouse;
Applications	IHC;IF;ELISA
Gene Name	IL17F IL24
Protein Name	Interleukin-17F (IL-17F) (Cytokine ML-1) (Interleukin-24) (IL-24)
Immunogen	Synthetic peptide from human protein at AA range: 81-130
Specificity	The antibody detects endogenous IL-17F
Formulation	Liquid in PBS containing 50% glycerol, 0.5% BSA and 0.02% sodium azide.
Source	Polyclonal, Rabbit,IgG
Purification	The antibody was affinity-purified from rabbit antiserum by affinity-chromatography using epitope-specific immunogen.
Dilution	IHC-p 1:50-200, ELISA 1:10000-20000. IF 1:50-200
Concentration	1 mg/ml
Purity	≥90%
Storage Stability	-20°C/1 year
Synonyms	Interleukin-17F (IL-17F;Cytokine ML-1;Interleukin-24;IL-24)
Observed Band	
Cell Pathway	Secreted .
Tissue Specificity	Expressed in T-helper 1 and T-helper 2 cells, basophils and mast cells.
Function	function:Stimulates the production of other cytokines such as IL-6, IL-8 and granulocyte colony-stimulating factor, and can regulate cartilage matrix turnover. Stimulates PBMC and T-cell proliferation. Inhibits angiogenesis.,online information:Interleukin-17 entry,similarity:Belongs to the IL-17 family.,subunit:Homodimer; disulfide-linked.,tissue specificity:Expressed in activated, but not resting, CD4+ T-cells and activated monocytes.,
Background	The protein encoded by this gene is a cytokine that shares sequence similarity with IL17. This cytokine is expressed by activated T cells, and has been shown to stimulate the production of several other cytokines, including IL6, IL8, and CSF2/GM-CSF. This cytokine is also found to inhibit the angiogenesis of endothelial cells and induce endothelial cells to produce IL2, TGFB1/TGFB, and monocyte chemoattractant protein-1. [provided by RefSeq, Jul 2008],
matters needing attention	Avoid repeated freezing and thawing!



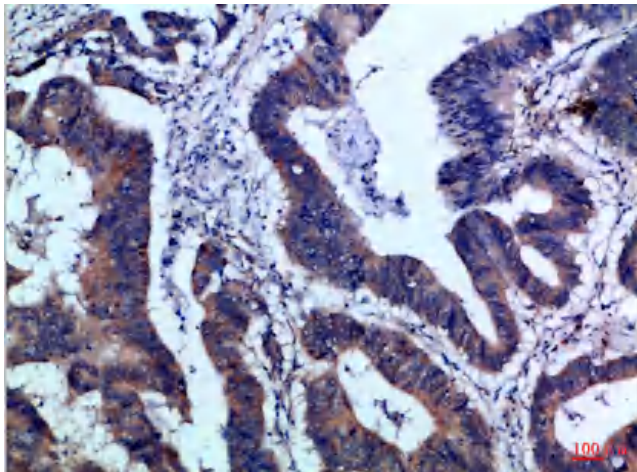
Usage suggestions

This product can be used in immunological reaction related experiments. For more information, please consult technical personnel.

Products Images



Immunohistochemical analysis of paraffin-embedded Human-colon-cancer, antibody was diluted at 1:100



Immunohistochemical analysis of paraffin-embedded Human-colon-cancer, antibody was diluted at 1:100