



# KCTD7 Polyclonal Antibody

<b>Catalog No</b>	YP-Ab-10762
<b>Isotype</b>	IgG
<b>Reactivity</b>	Human;Mouse;Rat
<b>Applications</b>	WB;ELISA;IHC
<b>Gene Name</b>	KCTD7
<b>Protein Name</b>	KCTD7
<b>Immunogen</b>	Synthesized peptide derived from human KCTD7. at AA range: 181-230
<b>Specificity</b>	This antibody detects endogenous levels of KCTD7
<b>Formulation</b>	Liquid in PBS containing 50% glycerol, 0.5% BSA and 0.02% sodium azide.
<b>Source</b>	Polyclonal, Rabbit,IgG
<b>Purification</b>	The antibody was affinity-purified from rabbit antiserum by affinity-chromatography using epitope-specific immunogen.
<b>Dilution</b>	WB 1:500-2000;IHC-p 1:50-300; ELISA 2000-20000
<b>Concentration</b>	1 mg/ml
<b>Purity</b>	≥90%
<b>Storage Stability</b>	-20°C/1 year
<b>Synonyms</b>	BTB/POZ domain-containing protein KCTD7
<b>Observed Band</b>	33kD
<b>Cell Pathway</b>	Cell membrane. Cytoplasm, cytosol.
<b>Tissue Specificity</b>	Brain,
<b>Function</b>	disease:Defects in KCTD7 are the cause of progressive myoclonic epilepsy type 3 (EPM3) [MIM:611726]. EPM3 is an autosomal recessive, severe, progressive myoclonic epilepsy with early-onset. Multifocal myoclonic seizures begin between 16 and 24 months of age after normal initial development. Neurodegeneration and regression occur with seizure onset. Other features include mental retardation, dysarthria, truncal ataxia, and loss of fine finger movements. EEG shows slow dysrhythmia, multifocal and occasionally generalized epileptiform discharges.,similarity:Contains 1 BTB (POZ) domain.,
<b>Background</b>	This gene encodes a member of the potassium channel tetramerization domain-containing protein family. Family members are identified on a structural basis and contain an amino-terminal domain similar to the T1 domain present in the voltage-gated potassium channel. Mutations in this gene have been associated with progressive myoclonic epilepsy-3. Alternative splicing results in multiple transcript variants.[provided by RefSeq, Jan 2011],



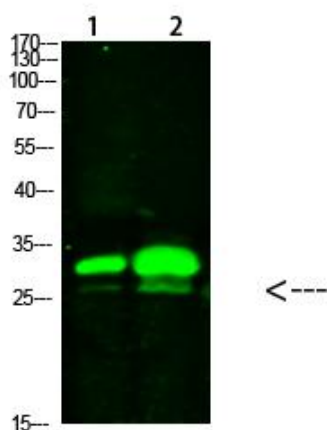
**matters needing attention**

Avoid repeated freezing and thawing!

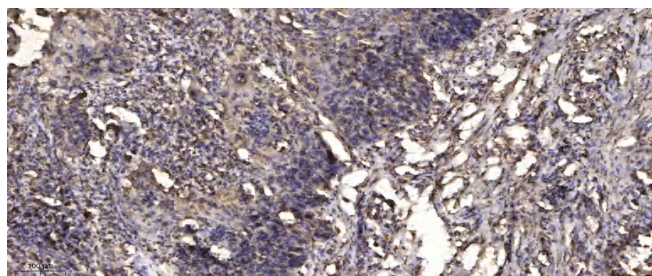
**Usage suggestions**

This product can be used in immunological reaction related experiments. For more information, please consult technical personnel.

**Products Images**



Western Blot analysis of 1,mouse-brain  
2,mouse-spleen cells using primary antibody diluted at  
1:1000(4°C overnight). Secondary antibody:Goat  
Anti-rabbit IgG IRDye 800( diluted at 1:5000, 25°C, 1  
hour)



Immunohistochemical analysis of paraffin-embedded  
human Squamous cell carcinoma of lung. 1, Antibody  
was diluted at 1:200(4° overnight). 2, Tris-EDTA,pH9.0  
was used for antigen retrieval. 3,Secondary antibody  
was diluted at 1:200(room temperature, 45min).