



## Dlx-2 Polyclonal Antibody

<b>Catalog No</b>	YP-Ab-10772
<b>Isotype</b>	IgG
<b>Reactivity</b>	Human;Mouse;Rat
<b>Applications</b>	WB;ELISA
<b>Gene Name</b>	DLX2
<b>Protein Name</b>	Dlx-2
<b>Immunogen</b>	Synthesized peptide derived from human Dlx-2. at AA range: 101-150
<b>Specificity</b>	Dlx-2 Polyclonal Antibody detects endogenous levels of Dlx-2
<b>Formulation</b>	Liquid in PBS containing 50% glycerol, 0.5% BSA and 0.02% sodium azide.
<b>Source</b>	Polyclonal, Rabbit,IgG
<b>Purification</b>	The antibody was affinity-purified from rabbit antiserum by affinity-chromatography using epitope-specific immunogen.
<b>Dilution</b>	WB 1:500-2000, ELISA 1:10000-20000
<b>Concentration</b>	1 mg/ml
<b>Purity</b>	≥90%
<b>Storage Stability</b>	-20°C/1 year
<b>Synonyms</b>	Homeobox protein DLX-2
<b>Observed Band</b>	42kD
<b>Cell Pathway</b>	Nucleus .
<b>Tissue Specificity</b>	Brain,Duodenum,Embryo,
<b>Function</b>	function:Likely to play a regulatory role in the development of the ventral forebrain. May play a role in craniofacial patterning and morphogenesis.,similarity:Belongs to the distal-less homeobox family.,similarity:Contains 1 homeobox DNA-binding domain.,
<b>Background</b>	Many vertebrate homeo box-containing genes have been identified on the basis of their sequence similarity with Drosophila developmental genes. Members of the Dlx gene family contain a homeobox that is related to that of Distal-less (Dll), a gene expressed in the head and limbs of the developing fruit fly. The Distal-less (Dlx) family of genes comprises at least 6 different members, DLX1-DLX6. The DLX proteins are postulated to play a role in forebrain and craniofacial development. This gene is located in a tail-to-tail configuration with another member of the gene family on the long arm of chromosome 2. [provided by RefSeq, Jul 2008],



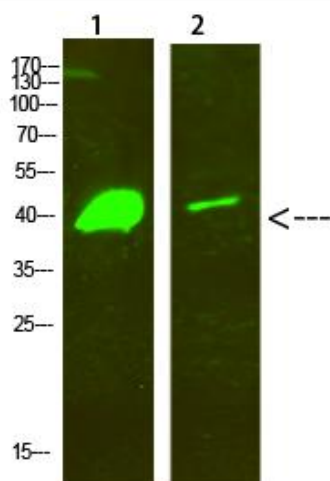
**matters needing attention**

Avoid repeated freezing and thawing!

**Usage suggestions**

This product can be used in immunological reaction related experiments. For more information, please consult technical personnel.

**Products Images**



Western Blot analysis of 1,hela 2,mouse-brain cells using primary antibody diluted at 1:500(4°C overnight). Secondary antibody:Goat Anti-rabbit IgG IRDye 800(diluted at 1:5000, 25°C, 1 hour)