



GCK/GLK Polyclonal Antibody

Catalog No	YP-Ab-10775
Isotype	IgG
Reactivity	Human;Rat
Applications	WB;ELISA
Gene Name	MAP4K2/MAP4K3
Protein Name	GCK/GLK
Immunogen	Synthesized peptide derived from human GCK/GLK. at AA range: 221-270
Specificity	GCK/GLK Polyclonal Antibody detects endogenous levels of GCK/GLK
Formulation	Liquid in PBS containing 50% glycerol, 0.5% BSA and 0.02% sodium azide.
Source	Polyclonal, Rabbit,IgG
Purification	The antibody was affinity-purified from rabbit antiserum by affinity-chromatography using epitope-specific immunogen.
Dilution	WB 1:500-2000, ELISA 1:10000-20000
Concentration	1 mg/ml
Purity	≥90%
Storage Stability	-20°C/1 year
Synonyms	Mitogen-activated protein kinase kinase kinase kinase 2 (EC 2.7.11.1) (B lymphocyte serine/threonine-protein kinase) (Germinal center kinase) (GC kinase) (MAPK/ERK kinase kinase kinase 2) (MEK kinase kinase 2) (MEKKK 2) (Rab8-interacting protein) Mitogen-activated protein kinase kinase kinase kinase 3 (EC 2.7.11.1) (Germinal center kinase-related protein kinase) (GLK) (MAPK/ERK kinase kinase kinase 3) (MEK kinase kinase 3) (MEKKK 3)
Observed Band	100kD
Cell Pathway	Cytoplasm . Basolateral cell membrane ; Peripheral membrane protein . Golgi apparatus membrane ; Peripheral membrane protein .
Tissue Specificity	Highly expressed in germinal center but not mantle zone B-cells. Also expressed in lung, brain and placenta and at lower levels in other tissues examined.
Function	catalytic activity:ATP + a protein = ADP + a phosphoprotein.,cofactor:Magnesium.,function:Enhances MAP3K1 oligomerization, which may relieve amino-terminal mediated MAP3K1 autoinhibition and lead to activation following autophosphorylation. May play a role in the regulation of vesicle targeting or fusion.,sequence caution:Contaminating sequence. Sequence of unknown origin in the N-terminal part.,similarity:Belongs to the protein kinase superfamily. STE Ser/Thr protein kinase family. STE20 subfamily.,similarity:Contains 1 CNH domain.,similarity:Contains 1 protein kinase domain.,subunit:Interacts with



TRAF2, MAP3K1 and RAB8A.,tissue specificity:Highly expressed in germinal center but not mantle zone B-cells. Also expressed in lung, brain and placenta and at lower levels in other tissues examined.,

Background

mitogen-activated protein kinase kinase kinase kinase 2(MAP4K2) Homo sapiens The protein encoded by this gene is a member of the serine/threonine protein kinase family. Although this kinase is found in many tissues, its expression in lymphoid follicles is restricted to the cells of germinal centre, where it may participate in B-cell differentiation. This kinase can be activated by TNF-alpha, and has been shown to specifically activate MAP kinases. This kinase is also found to interact with TNF receptor-associated factor 2 (TRAF2), which is involved in the activation of MAP3K1/MEKK1. Alternative splicing results in multiple transcript variants. [provided by RefSeq, Apr 2015],

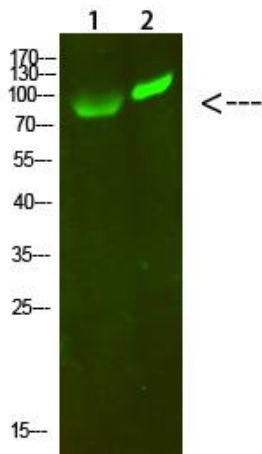
matters needing attention

Avoid repeated freezing and thawing!

Usage suggestions

This product can be used in immunological reaction related experiments. For more information, please consult technical personnel.

Products Images



Western Blot analysis of 1,293T 2,hela cells using primary antibody diluted at 1:1000(4°C overnight). Secondary antibody:Goat Anti-rabbit IgG IRDye 800(diluted at 1:5000, 25°C, 1 hour)