



DDR1 antibody

Catalog No	YP-Ab-10797
Isotype	IgG
Reactivity	Human;Mouse;Rat
Applications	WB;ELISA
Gene Name	DDR1 CAK EDDR1 NEP NTRK4 PTK3A RTK6 TRKE
Protein Name	Epithelial discoidin domain-containing receptor 1 (Epithelial discoidin domain receptor 1) (EC 2.7.10.1) (CD167 antigen-like family member A) (Cell adhesion kinase) (Discoidin receptor tyrosine kinase)
Immunogen	Synthesized peptide derived from human DDR1
Specificity	This antibody detects endogenous levels of DDR1 antibody
Formulation	Liquid in PBS containing 50% glycerol, 0.5% BSA and 0.02% sodium azide.
Source	Polyclonal, Rabbit,IgG
Purification	The antibody was affinity-purified from rabbit antiserum by affinity-chromatography using epitope-specific immunogen.
Dilution	WB 1:500-2000, ELISA 1:10000-20000
Concentration	1 mg/ml
Purity	≥90%
Storage Stability	-20°C/1 year
Synonyms	Epithelial discoidin domain-containing receptor 1 (Epithelial discoidin domain receptor 1) (EC 2.7.10.1) (CD167 antigen-like family member A) (Cell adhesion kinase) (Discoidin receptor tyrosine kinase) (HGK2) (Mammary carcinoma kinase 10) (MCK-10) (Protein-tyrosine kinase 3A) (Protein-tyrosine kinase RTK-6) (TRK E) (Tyrosine kinase DDR) (Tyrosine-protein kinase CAK) (CD antigen CD167a)
Observed Band	130kD
Cell Pathway	[Isoform 1]: Cell membrane; Single-pass type I membrane protein.; [Isoform 2]: Cell membrane; Single-pass type I membrane protein.; [Isoform 3]: Secreted .; [Isoform 4]: Cell membrane; Single-pass type I membrane protein.
Tissue Specificity	Detected in T-47D, MDA-MB-175 and HBL-100 breast carcinoma cells, A-431 epidermoid carcinoma cells, SW48 and SNU-C2B colon carcinoma cells and Hs 294T melanoma cells (at protein level). Expressed at low levels in most adult tissues and is highest in the brain, lung, placenta and kidney. Lower levels of expression are detected in melanocytes, heart, liver, skeletal muscle and pancreas. Abundant in breast carcinoma cell lines. In the colonic mucosa, expressed in epithelia but not in the connective tissue of the lamina propria. In the thyroid gland, expressed in the epithelium of the thyroid follicles. In pancreas, expressed in the islets of Langerhans cells, but not in the surrounding epithelial cells of the exocrine pancreas. In kidney, expressed in the epithelia of the distal tubules. Not



Function

catalytic activity:ATP + a [protein]-L-tyrosine = ADP + a [protein]-L-tyrosine phosphate.,domain:The Gly/Pro-rich domains may be required for an unusual geometry of interaction with ligand or substrates.,function:May be involved in cell-cell interactions and recognition.,similarity:Belongs to the protein kinase superfamily. Tyr protein kinase family. Insulin receptor subfamily.,similarity:Contains 1 F5/8 type C domain.,similarity:Contains 1 protein kinase domain.,tissue specificity:Expressed at low levels in most adult tissues and is highest in the brain and lung. Abundant in breast carcinoma cell lines.,

Background

Receptor tyrosine kinases play a key role in the communication of cells with their microenvironment. These kinases are involved in the regulation of cell growth, differentiation and metabolism. The protein encoded by this gene belongs to a subfamily of tyrosine kinase receptors with homology to Dictyostelium discoideum protein discoidin I in their extracellular domain, and that are activated by various types of collagen. Expression of this protein is restricted to epithelial cells, particularly in the kidney, lung, gastrointestinal tract, and brain. In addition, it has been shown to be significantly overexpressed in several human tumors. Alternatively spliced transcript variants encoding different isoforms have been described for this gene. [provided by RefSeq, Feb 2011],

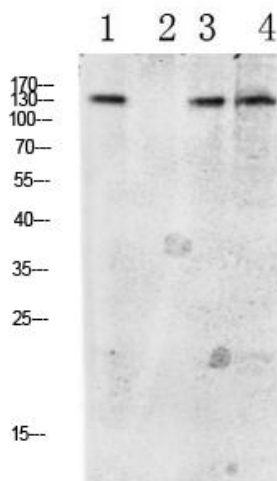
matters needing attention

Avoid repeated freezing and thawing!

Usage suggestions

This product can be used in immunological reaction related experiments. For more information, please consult technical personnel.

Products Images



- 1 customer' s
- 2 HEPG2 UV
- 3 3T3
- 4 CAC02

Western blot analysis of various lysate, antibody was diluted at 1000. Secondary antibody(catalog#:RS0002) was diluted at 1:20000