



PAR1 (Cleaved-Ser42) Polyclonal Antibody

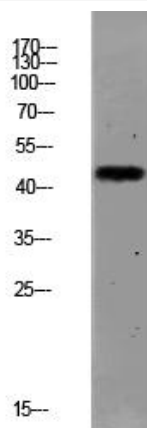
Catalog No	YP-Ab-10822
Isotype	IgG
Reactivity	Human;Mouse;Rat
Applications	WB;ELISA
Gene Name	F2R CF2R PAR1 TR
Protein Name	Proteinase-activated receptor 1 (PAR-1) (Coagulation factor II receptor) (Thrombin receptor)
Immunogen	Synthesized peptide derived from human PAR1 (Cleaved-Ser42) Polyclonal
Specificity	This antibody detects endogenous levels of PAR1 (Cleaved-Ser42).
Formulation	Liquid in PBS containing 50% glycerol, 0.5% BSA and 0.02% sodium azide.
Source	Polyclonal, Rabbit,IgG
Purification	The antibody was affinity-purified from rabbit antiserum by affinity-chromatography using epitope-specific immunogen.
Dilution	WB 1:500-2000, ELISA 1:10000-20000
Concentration	1 mg/ml
Purity	≥90%
Storage Stability	-20°C/1 year
Synonyms	Proteinase-activated receptor 1 (PAR-1) (Coagulation factor II receptor) (Thrombin receptor)
Observed Band	46kD
Cell Pathway	Cell membrane; Multi-pass membrane protein.
Tissue Specificity	Platelets and vascular endothelial cells.
Function	function:High affinity receptor for activated thrombin coupled to G proteins that stimulate phosphoinositide hydrolysis. May play a role in platelets activation and in vascular development.,PTM:A proteolytic cleavage generates a new N-terminus that functions as a tethered ligand.,PTM:Phosphorylated; probably mediating desensitization prior to the uncoupling and internalization of the receptor.,similarity:Belongs to the G-protein coupled receptor 1 family.,tissue specificity:Platelets and vascular endothelial cells.,
Background	Coagulation factor II receptor is a 7-transmembrane receptor involved in the regulation of thrombotic response. Proteolytic cleavage leads to the activation of the receptor. F2R is a G-protein coupled receptor family member. Alternative splicing results in multiple transcript variants. [provided by RefSeq, Aug 2015],
matters needing attention	Avoid repeated freezing and thawing!



Usage suggestions

This product can be used in immunological reaction related experiments. For more information, please consult technical personnel.

Products Images



Western blot analysis of MCF-7 lysate, antibody was diluted at 1000. Secondary antibody(catalog#:RS0002) was diluted at 1:20000