

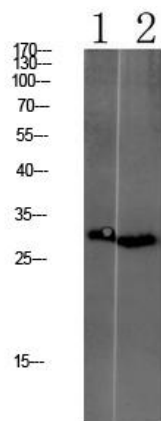


# Tmem72 Polyclonal Antibody

<b>Catalog No</b>	YP-Ab-10824
<b>Isotype</b>	IgG
<b>Reactivity</b>	Human;Mouse;Rat
<b>Applications</b>	WB;ELISA
<b>Gene Name</b>	TMEM72 C10orf127 KSP37
<b>Protein Name</b>	Transmembrane protein 72 (Kidney-specific secretory protein of 37 kDa)
<b>Immunogen</b>	Synthesized peptide derived from human Tmem72 Polyclonal
<b>Specificity</b>	This antibody detects endogenous levels of Tmem72.
<b>Formulation</b>	Liquid in PBS containing 50% glycerol, 0.5% BSA and 0.02% sodium azide.
<b>Source</b>	Polyclonal, Rabbit,IgG
<b>Purification</b>	The antibody was affinity-purified from rabbit antiserum by affinity-chromatography using epitope-specific immunogen.
<b>Dilution</b>	WB 1:500-2000, ELISA 1:10000-20000
<b>Concentration</b>	1 mg/ml
<b>Purity</b>	≥90%
<b>Storage Stability</b>	-20°C/1 year
<b>Synonyms</b>	Transmembrane protein 72 (Kidney-specific secretory protein of 37 kDa)
<b>Observed Band</b>	30kD
<b>Cell Pathway</b>	Membrane ; Multi-pass membrane protein .
<b>Tissue Specificity</b>	
<b>Function</b>	
<b>Background</b>	This gene encodes a transmembrane protein which may be expressed specifically in the kidney. [provided by RefSeq, Sep 2016],
<b>matters needing attention</b>	Avoid repeated freezing and thawing!
<b>Usage suggestions</b>	This product can be used in immunological reaction related experiments. For more information, please consult technical personnel.



## Products Images



1 mouse-liver

2 CAC02

Western blot analysis of various lysate, antibody was diluted at 1000. Secondary antibody(catalog#:RS0002) was diluted at 1:20000