



# ST2A1 Polyclonal Antibody

<b>Catalog No</b>	YP-Ab-10830
<b>Isotype</b>	IgG
<b>Reactivity</b>	Human;Rat;Mouse;
<b>Applications</b>	WB;IHC;IF;ELISA
<b>Gene Name</b>	SULT2A1 HST STD
<b>Protein Name</b>	ST2A1
<b>Immunogen</b>	Synthesized peptide derived from human ST2A1
<b>Specificity</b>	This antibody detects endogenous levels of human ST2A1
<b>Formulation</b>	Liquid in PBS containing 50% glycerol, 0.5% BSA and 0.02% sodium azide.
<b>Source</b>	Polyclonal, Rabbit,IgG
<b>Purification</b>	The antibody was affinity-purified from rabbit serum by affinity-chromatography using specific immunogen.
<b>Dilution</b>	WB: 1/500 - 1/2000. IHC: 1/100 - 1/300. ELISA: 1/40000.. IF 1:50-200
<b>Concentration</b>	1 mg/ml
<b>Purity</b>	≥90%
<b>Storage Stability</b>	-20°C/1 year
<b>Synonyms</b>	Bile salt sulfotransferase (EC 2.8.2.14;Dehydroepiandrosterone sulfotransferase;DHEA-ST;Hydroxysteroid Sulfotransferase;HST;ST2;ST2A3;Sulfotransferase 2A1;ST2A1)
<b>Observed Band</b>	34kD
<b>Cell Pathway</b>	Cytoplasm .
<b>Tissue Specificity</b>	Liver, adrenal and at lower level in the kidney. Is present in human fetus in higher level in the adrenal than the liver and the kidney.
<b>Function</b>	catalytic activity:3'-phosphoadenylyl sulfate + glycolithocholate = adenosine 3',5'-bisphosphate + glycolithocholate 3-sulfate.,catalytic activity:3'-phosphoadenylyl sulfate + tauroolithocholate = adenosine 3',5'-bisphosphate + tauroolithocholate sulfate.,function:Catalyzes the sulfation of steroids and bile acids in the liver and adrenal glands.,miscellaneous:Estrogens present in maternal circulation is predominantly derived from fetal dehydroepiandrosterone sulfate which is hydrolyzed and metabolized to estrogens in placenta.,PTM:The N-terminus is blocked.,similarity:Belongs to the sulfotransferase 1 family.,subunit:Homodimer.,tissue specificity:Liver, adrenal and at lower level in the kidney. Is present in human fetus in higher level in the adrenal than the liver and the kidney.,
<b>Background</b>	This gene encodes a member of the sulfotransferase family. Sulfotransferases aid in the metabolism of drugs and endogenous compounds by converting these



substances into more hydrophilic water-soluble sulfate conjugates that can be easily excreted. This protein catalyzes the sulfation of steroids and bile acids in the liver and adrenal glands, and may have a role in the inherited adrenal androgen excess in women with polycystic ovary syndrome. [provided by RefSeq, Mar 2010],

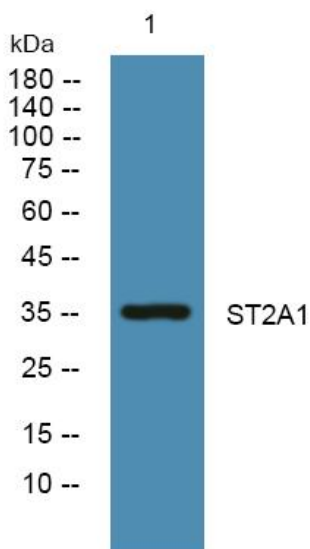
**matters needing attention**

Avoid repeated freezing and thawing!

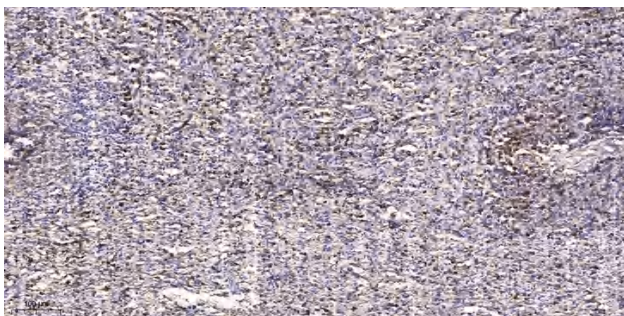
**Usage suggestions**

This product can be used in immunological reaction related experiments. For more information, please consult technical personnel.

## Products Images



Western blot analysis of lysates from KB cells, primary antibody was diluted at 1:1000, 4° over night



Immunohistochemical analysis of paraffin-embedded human spleen tissue. 1, primary Antibody was diluted at 1:200(4° overnight). 2, Sodium citrate pH 6.0 was used for antigen retrieval(>98°C,20min). 3, Secondary antibody was diluted at 1:200