

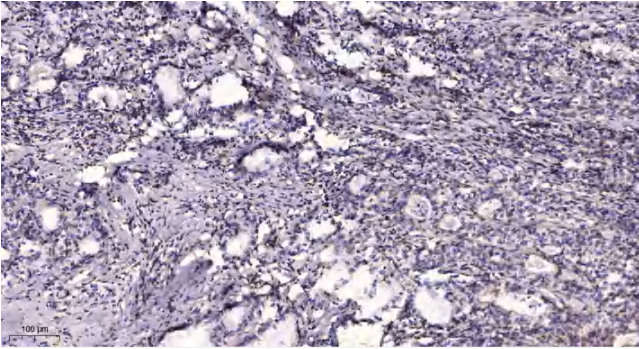


CCD19 Polyclonal Antibody

Catalog No	YP-Ab-10833
Isotype	IgG
Reactivity	Human;Rat;Mouse;
Applications	IHC;IF;WB
Gene Name	CCDC19 NESG1
Protein Name	CCD19
Immunogen	Synthesized peptide derived from human CCD19
Specificity	This antibody detects endogenous levels of human CCD19
Formulation	Liquid in PBS containing 50% glycerol, 0.5% BSA and 0.02% sodium azide.
Source	Polyclonal, Rabbit,IgG
Purification	The antibody was affinity-purified from rabbit serum by affinity-chromatography using specific immunogen.
Dilution	IHC-p 1:50-200, WB 1:500-2000. IF 1:50-200
Concentration	1 mg/ml
Purity	≥90%
Storage Stability	-20°C/1 year
Synonyms	Coiled-coil domain-containing protein 19, mitochondrial (Nasopharyngeal epithelium-specific protein 1)
Observed Band	60kD
Cell Pathway	Cytoplasm, cytoskeleton, cilium axoneme . Cytoplasm, cytoskeleton, flagellum axoneme . Located in the proximal region of respiratory cilia. .
Tissue Specificity	Expressed in respiratory cells and in sperm (at protein level) (PubMed:33139725). Expressed in nasopharyngeal epithelium and trachea (PubMed:10524255).
Function	tissue specificity:Expressed in nasopharyngeal epithelium and trachea but not in esophagus, stomach, large intestine, liver, cerebrum, heart, bladder, kidney, thymus, or lung.,
Background	tissue specificity:Expressed in nasopharyngeal epithelium and trachea but not in esophagus, stomach, large intestine, liver, cerebrum, heart, bladder, kidney, thymus, or lung.,
matters needing attention	Avoid repeated freezing and thawing!
Usage suggestions	This product can be used in immunological reaction related experiments. For more information, please consult technical personnel.



Products Images



Immunohistochemical analysis of paraffin-embedded human Gastric adenocarcinoma. 1, Antibody was diluted at 1:200(4° overnight). 2, Tris-EDTA,pH9.0 was used for antigen retrieval. 3,Secondary antibody was diluted at 1:200(room temperature, 45min).