

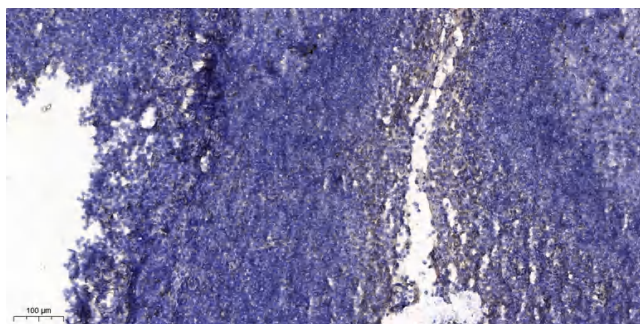


Secretogranin-1 Polyclonal Antibody

Catalog No	YP-Ab-10846
Isotype	IgG
Reactivity	Human; Mouse; Rat
Applications	IHC;IF;WB
Gene Name	CHGB SCG1
Protein Name	Secretogranin-1
Immunogen	Synthesized peptide derived from human Secretogranin-1
Specificity	This antibody detects endogenous levels of human Secretogranin-1
Formulation	Liquid in PBS containing 50% glycerol, 0.5% BSA and 0.02% sodium azide.
Source	Polyclonal, Rabbit,IgG
Purification	The antibody was affinity-purified from rabbit serum by affinity-chromatography using specific immunogen.
Dilution	IHC-p 1:50-200, WB 1:500-2000. IF 1:50-200
Concentration	1 mg/ml
Purity	≥90%
Storage Stability	-20°C/1 year
Synonyms	Secretogranin-1 (Chromogranin-B;CgB;Secretogranin I;Sgl) [Cleaved into: GAWK peptide; CCB peptide]
Observed Band	78kD
Cell Pathway	Secreted. Neuroendocrine and endocrine secretory granules.
Tissue Specificity	Expressed in the adrenal medulla, and in pheochromocytoma. Not expressed in liver.
Function	function:Secretogranin-1 is a neuroendocrine secretory granule protein, which may be the precursor for other biologically active peptides.,PTM:Extensively processed by limited proteolysis at conserved basic residues. Alternative processing are seen in different tissues.,similarity:Belongs to the chromogranin/secretogranin protein family.,subcellular location:Neuroendocrine and endocrine secretory granules.,tissue specificity:Expressed in the adrenal medulla, and in pheochromocytoma. Not expressed in liver.,
Background	This gene encodes a tyrosine-sulfated secretory protein abundant in peptidergic endocrine cells and neurons. This protein may serve as a precursor for regulatory peptides. [provided by RefSeq, Jan 2009],
matters needing attention	Avoid repeated freezing and thawing!

**Usage suggestions**

This product can be used in immunological reaction related experiments. For more information, please consult technical personnel.

Products Images

Immunohistochemical analysis of paraffin-embedded human tonsil. 1, Antibody was diluted at 1:200(4° overnight). 2, Tris-EDTA,pH9.0 was used for antigen retrieval. 3,Secondary antibody was diluted at 1:200(room temperature, 30min).