



# HPLN1 Polyclonal Antibody

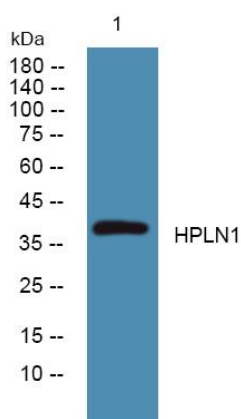
<b>Catalog No</b>	YP-Ab-10862
<b>Isotype</b>	IgG
<b>Reactivity</b>	Human; Mouse; Rat
<b>Applications</b>	IHC;IF;WB
<b>Gene Name</b>	HAPLN1 CRTL1
<b>Protein Name</b>	HPLN1
<b>Immunogen</b>	Synthesized peptide derived from human HPLN1
<b>Specificity</b>	This antibody detects endogenous levels of human HPLN1
<b>Formulation</b>	Liquid in PBS containing 50% glycerol, 0.5% BSA and 0.02% sodium azide.
<b>Source</b>	Polyclonal, Rabbit,IgG
<b>Purification</b>	The antibody was affinity-purified from rabbit serum by affinity-chromatography using specific immunogen.
<b>Dilution</b>	IHC-p 1:50-200, WB 1:500-2000. IF 1:50-200
<b>Concentration</b>	1 mg/ml
<b>Purity</b>	≥90%
<b>Storage Stability</b>	-20°C/1 year
<b>Synonyms</b>	Hyaluronan and proteoglycan link protein 1 (Cartilage-linking protein 1;Cartilage-link protein;Proteoglycan link protein)
<b>Observed Band</b>	38kD
<b>Cell Pathway</b>	Secreted, extracellular space, extracellular matrix.
<b>Tissue Specificity</b>	Widely expressed. Weakly expressed in the brain.
<b>Function</b>	function:Stabilizes the aggregates of proteoglycan monomers with hyaluronic acid in the extracellular cartilage matrix.,similarity:Belongs to the HAPLN family.,similarity:Contains 1 Ig-like V-type (immunoglobulin-like) domain.,similarity:Contains 2 Link domains.,tissue specificity:Widely expressed. Weakly expressed in the brain.,
<b>Background</b>	function:Stabilizes the aggregates of proteoglycan monomers with hyaluronic acid in the extracellular cartilage matrix.,similarity:Belongs to the HAPLN family.,similarity:Contains 1 Ig-like V-type (immunoglobulin-like) domain.,similarity:Contains 2 Link domains.,tissue specificity:Widely expressed. Weakly expressed in the brain.,
<b>matters needing attention</b>	Avoid repeated freezing and thawing!



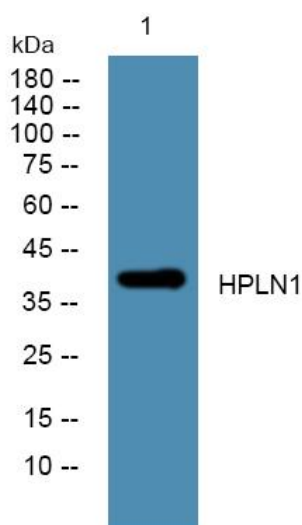
### Usage suggestions

This product can be used in immunological reaction related experiments. For more information, please consult technical personnel.

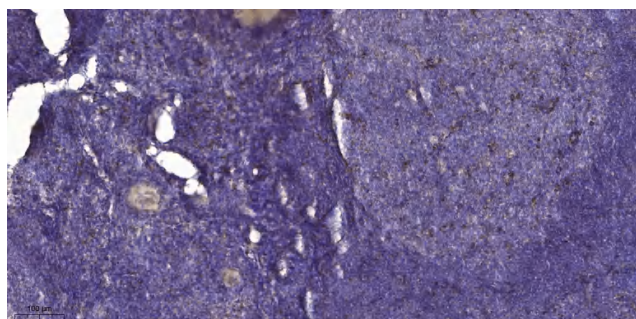
## Products Images



Western blot analysis of lysates from SH-SY5Y cells, primary antibody was diluted at 1:1000, 4° over night



Western blot analysis of lysates from HCT116 cells, primary antibody was diluted at 1:1000, 4° over night



Immunohistochemical analysis of paraffin-embedded human tonsil. 1, Antibody was diluted at 1:200(4° overnight). 2, Tris-EDTA,pH9.0 was used for antigen retrieval. 3,Secondary antibody was diluted at 1:200(room temperature, 30min).