

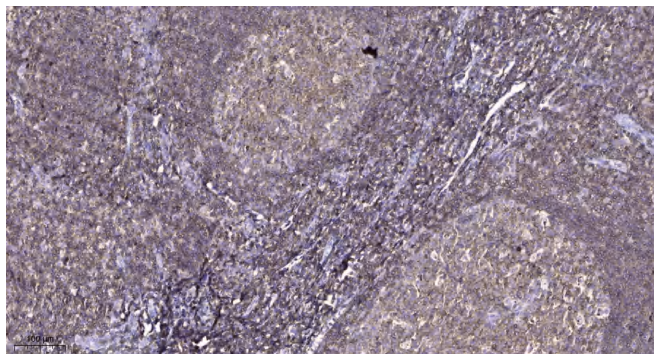


# CPO Polyclona Antibody

<b>Catalog No</b>	YP-Ab-10888
<b>Isotype</b>	IgG
<b>Reactivity</b>	Human;Rat;Mouse;
<b>Applications</b>	IHC; ELISA
<b>Gene Name</b>	CPO
<b>Protein Name</b>	CPO
<b>Immunogen</b>	Synthesized peptide derived from human CPO AA range: 50-100
<b>Specificity</b>	This antibody detects endogenous levels of human CPO
<b>Formulation</b>	Liquid in PBS containing 50% glycerol, 0.5% BSA and 0.02% sodium azide.
<b>Source</b>	Polyclonal, Rabbit,IgG
<b>Purification</b>	The antibody was affinity-purified from mouse ascites by affinity-chromatography using specific immunogen.
<b>Dilution</b>	IHC-p 1:50-200, ELISA(peptide)1:5000-20000
<b>Concentration</b>	1 mg/ml
<b>Purity</b>	≥90%
<b>Storage Stability</b>	-20°C/1 year
<b>Synonyms</b>	Carboxypeptidase O (CPO;EC 3.4.17.-)
<b>Observed Band</b>	
<b>Cell Pathway</b>	Apical cell membrane ; Lipid-anchor, GPI-anchor .
<b>Tissue Specificity</b>	Detected in enterocytes of the ileum.
<b>Function</b>	cofactor: Binds 1 zinc ion per subunit.,function: Probable carboxypeptidase which may cleave proteins with C-terminal acidic residues.,similarity: Belongs to the peptidase M14 family.,
<b>Background</b>	carboxypeptidase O(CPO) Homo sapiens This gene is a member of the metallo-carboxypeptidase gene family. [provided by RefSeq, Jan 2011],
<b>matters needing attention</b>	Avoid repeated freezing and thawing!
<b>Usage suggestions</b>	This product can be used in immunological reaction related experiments. For more information, please consult technical personnel.



## Products Images



Immunohistochemical analysis of paraffin-embedded human tonsil. 1, Antibody was diluted at 1:200(4° overnight). 2, Tris-EDTA,pH9.0 was used for antigen retrieval. 3,Secondary antibody was diluted at 1:200(room temperature, 45min).