

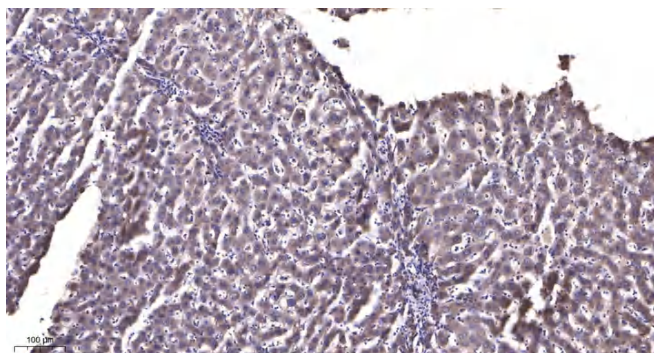


COX6B2 Polyclona Antibody

Catalog No	YP-Ab-10905
Isotype	IgG
Reactivity	Human;Rat;Mouse;
Applications	IHC; ELISA
Gene Name	COX6B2
Protein Name	COX6B2
Immunogen	Synthesized peptide derived from human COX6B2 AA range: 40-120
Specificity	This antibody detects endogenous levels of human COX6B2
Formulation	Liquid in PBS containing 50% glycerol, 0.5% BSA and 0.02% sodium azide.
Source	Polyclonal, Rabbit,IgG
Purification	The antibody was affinity-purified from mouse ascites by affinity-chromatography using specific immunogen.
Dilution	IHC-p 1:50-200, ELISA(peptide)1:5000-20000
Concentration	1 mg/ml
Purity	≥90%
Storage Stability	-20°C/1 year
Synonyms	Cytochrome c oxidase subunit 6B2 (Cancer/testis antigen 59;CT59;Cytochrome c oxidase subunit VIb isoform 2;COX VIb-2;Cytochrome c oxidase subunit VIb, testis-specific isoform)
Observed Band	
Cell Pathway	Mitochondrion inner membrane ; Peripheral membrane protein ; Intermembrane side .
Tissue Specificity	Testis specific. Weak expression in thymus and heart. Expressed in cancer cell lines.
Function	function:Connects the two COX monomers into the physiological dimeric form.,similarity:Belongs to the cytochrome c oxidase subunit 6B family.,tissue specificity:Testis specific. Weak expression in thymus and heart. Expressed in cancer cell lines.,
Background	function:Connects the two COX monomers into the physiological dimeric form.,similarity:Belongs to the cytochrome c oxidase subunit 6B family.,tissue specificity:Testis specific. Weak expression in thymus and heart. Expressed in cancer cell lines.,
matters needing attention	Avoid repeated freezing and thawing!

**Usage suggestions**

This product can be used in immunological reaction related experiments. For more information, please consult technical personnel.

Products Images

Immunohistochemical analysis of paraffin-embedded human liver cancer. 1, Antibody was diluted at 1:200(4° overnight). 2, Tris-EDTA,pH9.0 was used for antigen retrieval. 3,Secondary antibody was diluted at 1:200(room temperature, 45min).