



GNG2 Polyclona Antibody

Catalog No	YP-Ab-10914
Isotype	IgG
Reactivity	Human; Mouse
Applications	IHC; ELISA
Gene Name	GNG2
Protein Name	GNG2
Immunogen	Synthesized peptide derived from human GNG2 AA range: 1-50
Specificity	This antibody detects endogenous levels of human GNG2
Formulation	Liquid in PBS containing 50% glycerol, 0.5% BSA and 0.02% sodium azide.
Source	Polyclonal, Rabbit,IgG
Purification	The antibody was affinity-purified from mouse ascites by affinity-chromatography using specific immunogen.
Dilution	IHC-p 1:50-200, ELISA(peptide)1:5000-20000
Concentration	1 mg/ml
Purity	≥90%
Storage Stability	-20°C/1 year
Synonyms	Guanine nucleotide-binding protein G(I)/G(S)/G(O) subunit gamma-2 (G gamma-I)
Observed Band	
Cell Pathway	Cell membrane ; Lipid-anchor ; Cytoplasmic side .
Tissue Specificity	Expressed in fetal tissues, including testis, adrenal gland, brain, white blood cells and brain.
Function	function:Guanine nucleotide-binding proteins (G proteins) are involved as a modulator or transducer in various transmembrane signaling systems. The beta and gamma chains are required for the GTPase activity, for replacement of GDP by GTP, and for G protein-effector interaction.,similarity:Belongs to the G protein gamma family.,subunit:G proteins are composed of 3 units, alpha, beta and gamma.,tissue specificity:Expressed in fetal tissues, including testis, adrenal gland, brain, white blood cells and brain.,
Background	G protein subunit gamma 2(GNG2) Homo sapiens This gene encodes one of the gamma subunits of a guanine nucleotide-binding protein. Such proteins are involved in signaling mechanisms across membranes. Various subunits forms heterodimers which then interact with the different signal molecules. [provided by RefSeq, Aug 2011],



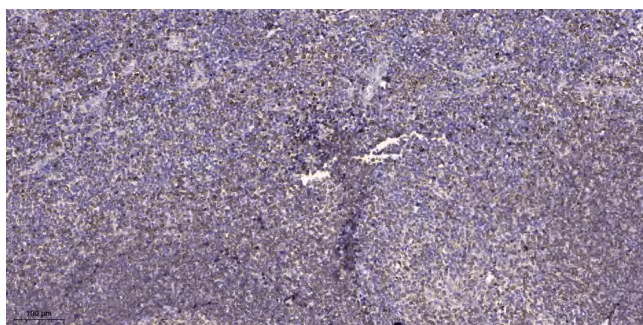
matters needing attention

Avoid repeated freezing and thawing!

Usage suggestions

This product can be used in immunological reaction related experiments. For more information, please consult technical personnel.

Products Images



Immunohistochemical analysis of paraffin-embedded human tonsil. 1, Antibody was diluted at 1:200(4° overnight). 2, Tris-EDTA,pH9.0 was used for antigen retrieval. 3,Secondary antibody was diluted at 1:200(room temperature, 45min).